



## 144 Railway Crescent Dallas VIC

3  1  4 

Set on approximately 543sqm, this well-positioned corner block in Dallas offers space, comfort, and future potential. The home features three bedrooms and one bathroom, perfect for couples or first home buyers looking to settle down. The open-plan living and dining area is designed for easy everyday living, providing a welcoming atmosphere for family and friends.

The generously sized lounge room offers plenty of space for relaxation or entertaining, making it a versatile area for any occasion. The large backyard is fully fenced, providing ample room for kids and pets to play safely or for future improvements to enhance the property further. With built-in robes and a gas hot water service, this home combines practicality with potential.

Conveniently located just moments away from local shops,

**Price** : \$ 620,000  
**Land Size** : 543 sqm  
**View** : <https://www.ypa.com.au/8588450>

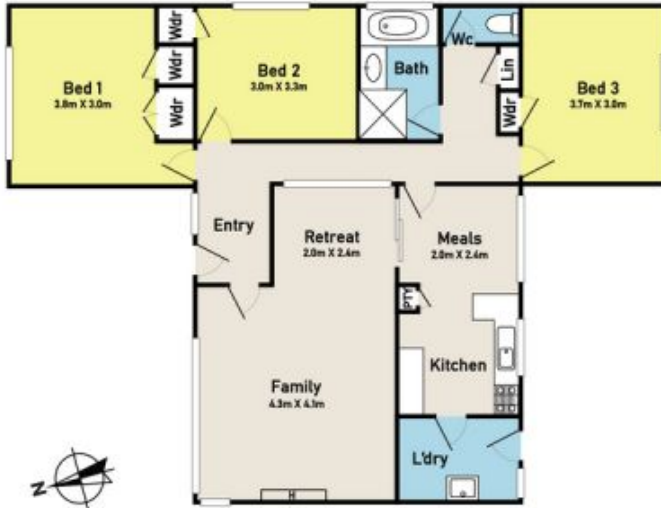


**Mohammed El Hawli**  
0466 882 117



**Annemarie Catanzariti**  
0404 113 911

Floor Plan



Site Plan



## 144 Railway Crescent, Dallas

The floor and site plan are provided for illustrative purposes only and are not to scale. While every effort has been made to ensure accuracy, neither the vendor, agency, supplier, nor PSM100Studios.au makes any warranty, guarantee, or representation regarding the accuracy, reliability, or completeness of the information contained herein. No responsibility or liability will be accepted for any errors, omissions, or discrepancies. Interested parties are strongly advised to conduct their own independent investigations and enquiries prior to making any decisions.