

## 38 Horder Crescent Darley VIC

3  3  4 

Positioned within one of the area's most tightly held estates, this exceptional residence delivers a refined balance of period-inspired architecture, resort-style outdoor living, and elevated outlooks that enhance both privacy and lifestyle appeal.

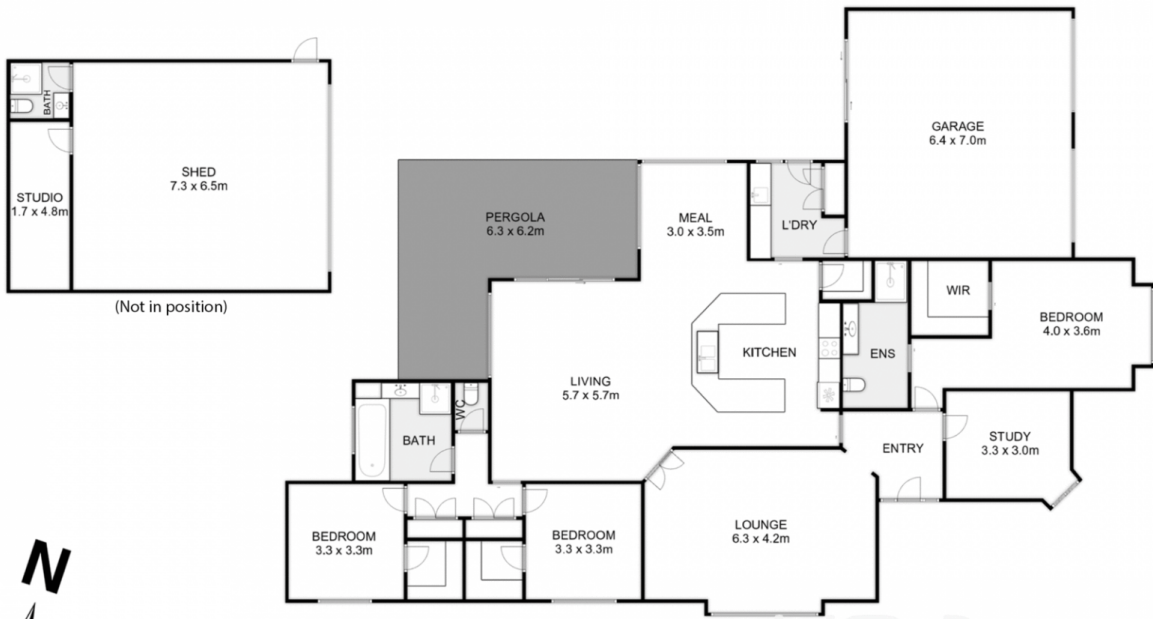
The federation-influenced home offers three generous bedrooms plus a dedicated study. The master suite is well appointed with a walk-in robe and ensuite, while the remaining bedrooms are also fitted with walk-in robes, providing excellent storage and everyday functionality.

At the heart of the home sits a warm timber kitchen, thoughtfully designed with ample cabinetry and quality appliances including an oven, gas cooktop, rangehood, and dishwasher. The kitchen seamlessly overlooks the central living and meals area, creating a connected space ideal for

**Price** : \$ 1,032,000  
**Land Size** : 1914 sqm  
**View** : <https://www.ypa.com.au/8587338>



**Shane O'Brien**  
0431 766 082



## 38 Horder Crescent, Darley

Whilst every attempt has been made to ensure the accuracy of the floor plan contained here, measurements of doors, windows, rooms and any other items are approximate and no responsibility is taken for any error, omission, or mis-statement. This plan is for illustrative purposes only and should be used as such by any prospective purchaser. The services, systems and appliances shown have not been tested and no guarantee as to their operability or efficiency can be given.

