



## 20A Palm Grove Dromana VIC

3 2 3

Positioned in a peaceful pocket just moments from the Dromana foreshore, this beautifully presented three-bedroom home delivers relaxed coastal living with space, flexibility and future potential.

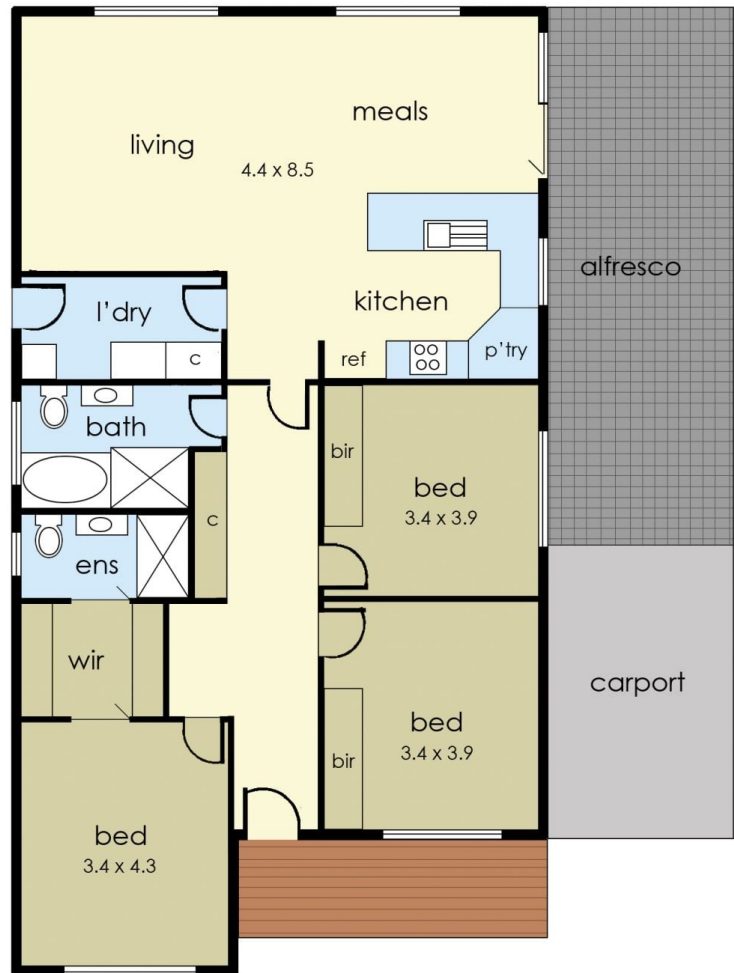
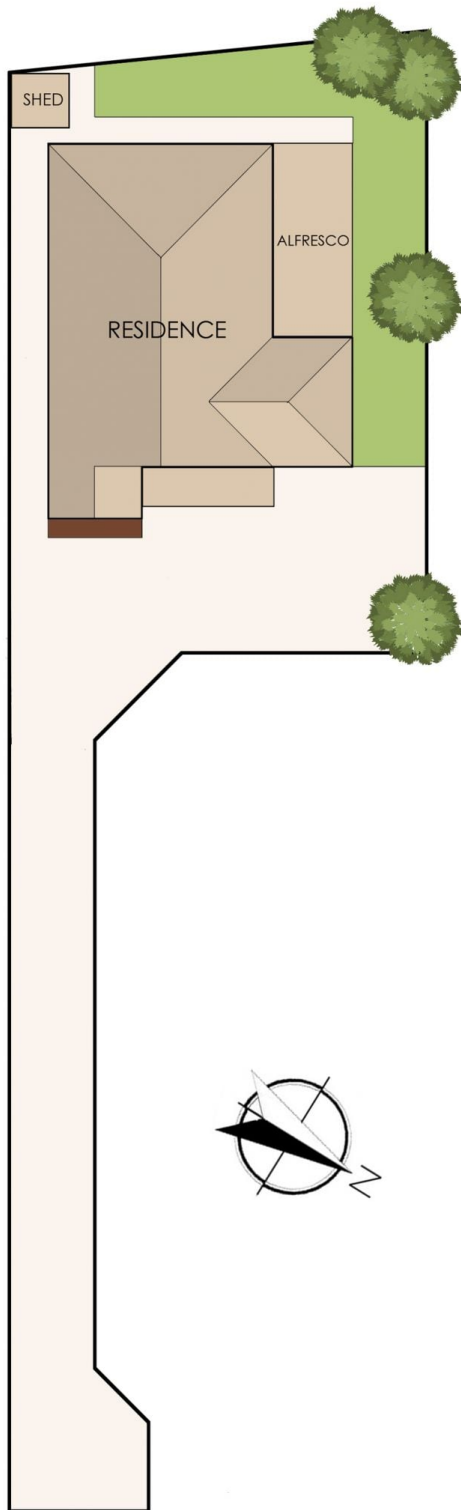
Approximately 10 years young and immaculately maintained, the home showcases engineered flooring, white timber blinds and light-filled interiors throughout. The well-proportioned layout includes three generous bedrooms, including a master with ensuite, designed consistently with the stylish main bathroom.

The central living and dining zone flows seamlessly to the outdoors, where a Stratco pergola creates the perfect setting for year-round entertaining, with the option to easily enclose with café blinds. Beyond, the lush L-shaped backyard is a standout, framed by four established fig trees

**Price** : \$ 900,000  
**Building Size** : 149 sqm  
**Land Size** : 524 sqm  
**View** : <https://www.ypa.com.au/8586763>



**Tracey Hedin**  
**0407 429 696**



## 20a Palm Grove, Dromana

The floor plan is provided for general information and illustrative purposes only. All measurements, dimensions, and layouts are approximate and may vary from the actual property. While every effort has been made to ensure accuracy, no responsibility is taken for any error, omission, or misstatement. Prospective buyers should not rely solely on the floor plan and are encouraged to conduct their own inspections and verify all details independently. The design and content of this floor plan remain the property of DND Floor Plans. ©