



19 Belinda Street Rye VIC

3 2 2

Positioned to capture beautiful outlooks and an unmistakable sense of coastal calm, 19 Belinda Street is a light filled Rye retreat where relaxed Peninsula living unfolds effortlessly across sun washed interiors and expansive outdoor spaces.

At the heart of the home, the main living zone soars beneath a striking vaulted ceiling, where exposed timber beams and an abundance of natural light create an immediate feeling of space, warmth and architectural character. Soft sea breezes drift through the room, enhancing the home's airy coastal ambience and drawing your eye toward the leafy views beyond, a backdrop that changes with the light throughout the day.

The open living area flows seamlessly to an expansive deck, designed for long lunches, sunset drinks and easy

Price : \$ 922,500
Land Size : 863 sqm
View : <https://www.ypa.com.au/8575351>



Tony Talarico
0420 778 401



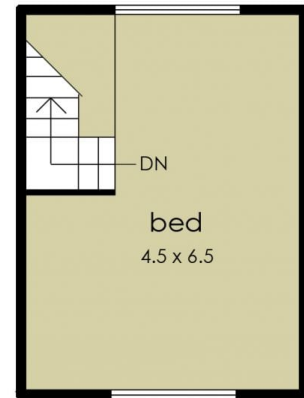
Sharnara Ryan
0457 186 833



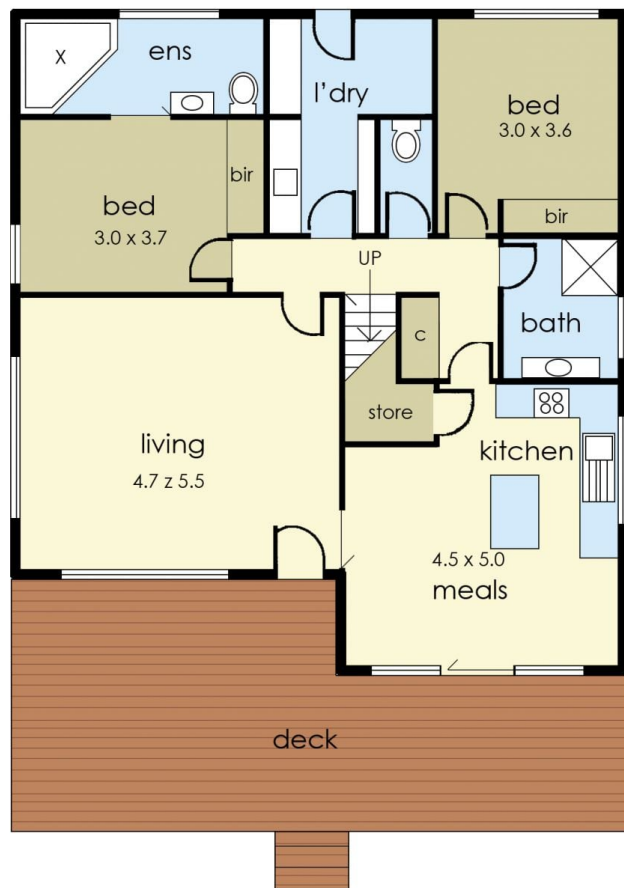
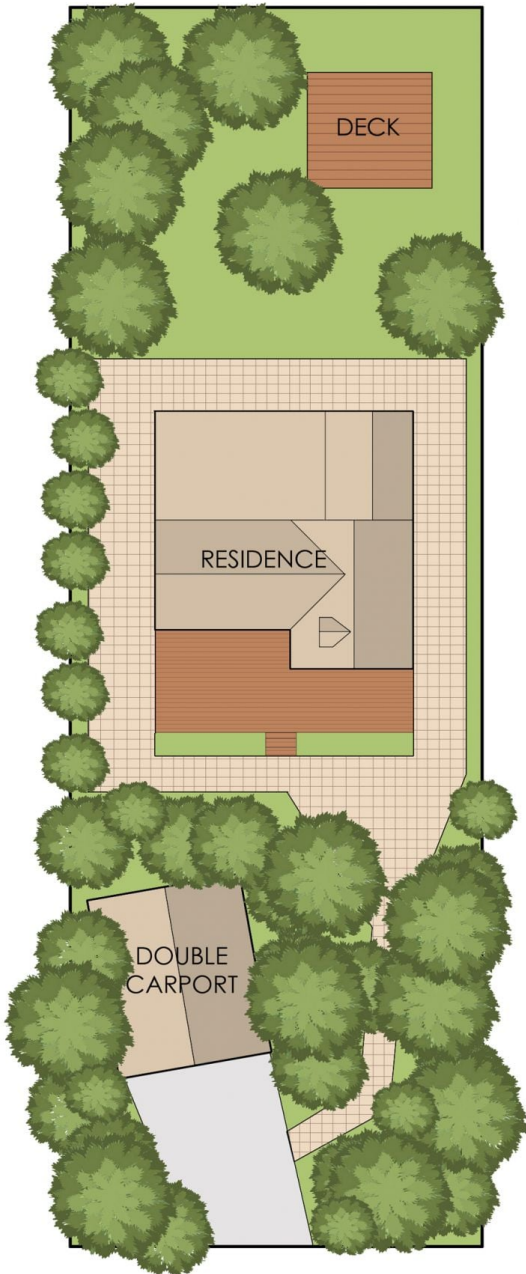
Internal living area
apprx: 16 squares

Decking area
apprx: 4 squares

Total area
apprx: 20 squares



FIRST FLOOR



19 Belinda Street, Rye

The floor plan is provided for general information and illustrative purposes only. All measurements, dimensions, and layouts are approximate and may vary from the actual property. While every effort has been made to ensure accuracy, no responsibility is taken for any error, omission, or misstatement. Prospective buyers should not rely solely on the floor plan and are encouraged to conduct their own inspections and verify all details independently. The design and content of this floor plan remain the property of DND Floor Plans. ©