

15 Cotteridge Place Caroline Springs VIC

4 2 4

Perfectly positioned in one of Caroline Springs' most sought-after and desirable pockets, this magnificent family residence delivers the ideal blend of space, comfort and lifestyle on an impressive 590m² (approx.) allotment. Thoughtfully designed for the growing family, it showcases multiple living zones, a flexible floorplan and a seamless indoor-outdoor connection-offering every essential for stylish, easy living. With public transport, lush parklands, quality schools and Caroline Springs Town Centre just moments away, the location is second to none.

Property Highlights:

- ? Master suite featuring his and hers walk-in robes and a private ensuite
- ? Three additional spacious bedrooms (two with built-in robes)
- ? Elegant formal lounge at the front of the home-ideal for

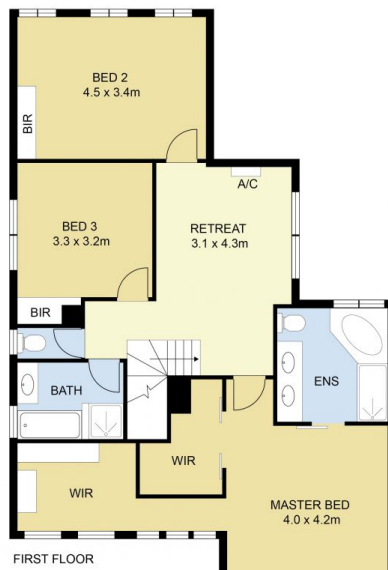
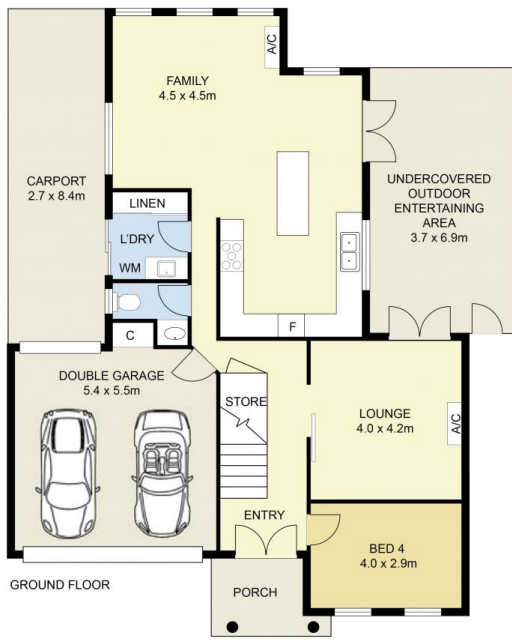
Price : \$ 890,000
Land Size : 590 sqm
View : <https://www.ypa.com.au/8573190>



Andrew Migliorisi
0432 526 844



Stephen Azzopardi
0402 012 554



SITE PLAN
(NOT TO SCALE)



15 Cotteridge Place, Caroline Springs

DISCLAIMER : ALL DIMENSIONS ARE AN APPROXIMATION ONLY AND NO GUARANTEE IS GIVEN WITH RESPECT TO ACCURACY.