



7 Wattletree Drive TAYLORS HILL VIC

3 2 2

Welcome to 7 Wattletree Drive, Taylors Hill, A well-kept and practical family home offering comfort, space, and everyday convenience. Designed with functionality in mind, this property provides a warm and welcoming lifestyle in one of the area's most sought-after pockets.

Step inside and be greeted by a separate living area upon entry, ideal for a formal lounge, or a quiet retreat for the family. The home flows effortlessly into the open-plan kitchen, meals, and living zone, creating the perfect hub for entertaining and day to-day living.

Featuring 3 good sized bedrooms, including a master with private ensuite, this home ensures privacy and space for every family member. The 2 spotless bathrooms provide practicality and comfort, while the generous double garage offers ample room not only for vehicles but also storage or

Price : \$ 684,000
Land Size : 410 sqm
View : <https://www.ypa.com.au/8566061>



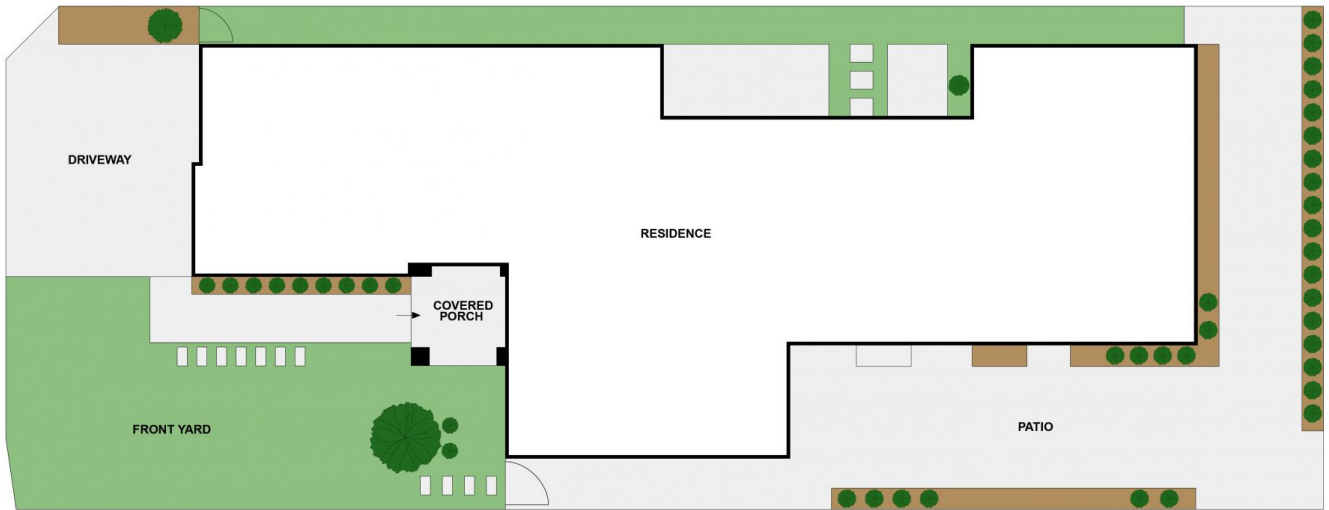
Eddi Bagdadi
0432 208 933



Nancy Crupi
0413 969 284



GROUND LEVEL



SITEPLAN



7 Wattletree Drive, Taylors Hill
All data and dimensions shown in this sketch are approximate.