



4 Supple Street Werribee VIC

4 🏠 2 🚗 2 🚗

Proudly positioned in one of Werribee's most sought-after pockets, this stylish and light-filled residence offers an exceptional lifestyle within the thriving Riverwalk Estate. Perfectly suited to families and busy professionals, the home provides easy access to quality education, parklands, transport, and the M1 Princes Freeway.

Just a short stroll to Riverwalk Primary School (P-6) and Aspire Early Learning & Kindergarten, convenience is truly at your doorstep. Commuting is effortless with Werribee Train Station only moments away and seamless freeway access to both the Melbourne CBD and Geelong.

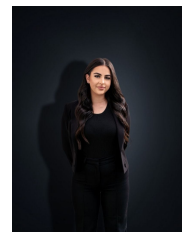
Property Features

- ? Four generous bedrooms, including a master suite with a large built-in robe and private ensuite
- ? Remaining bedrooms fitted with double built-in robes,

View : <https://www.ypa.com.au/8559951>



Ashley Gates
0424 267 675



Stefanie Zahra
0406 871 722