



## 19 Gellibrand Street Werribee VIC

3  2  2 

This is not your standard Riverwalk home, it's a carefully curated residence where every detail has been considered, from the lighting above your head to the security at your door.

Step inside and be greeted by a light-filled interior enhanced with over 20 LED down lights and designer pendant features, creating warmth and ambience throughout. The open-plan living and dining flows seamlessly to the backyard through a wide stacker door, perfect for entertaining.

The kitchen is a true showpiece, boasting stone benchtops, a 900mm Westinghouse oven and cooktop with canopy rangehood, a walk-in pantry with custom shelving, pendant lighting, and ample storage.

Retreat to the master suite, complete with a walk-in robe

**Price** : \$ 670,000

**Land Size** : 349 sqm

**View** : <https://www.ypa.com.au/8557263>

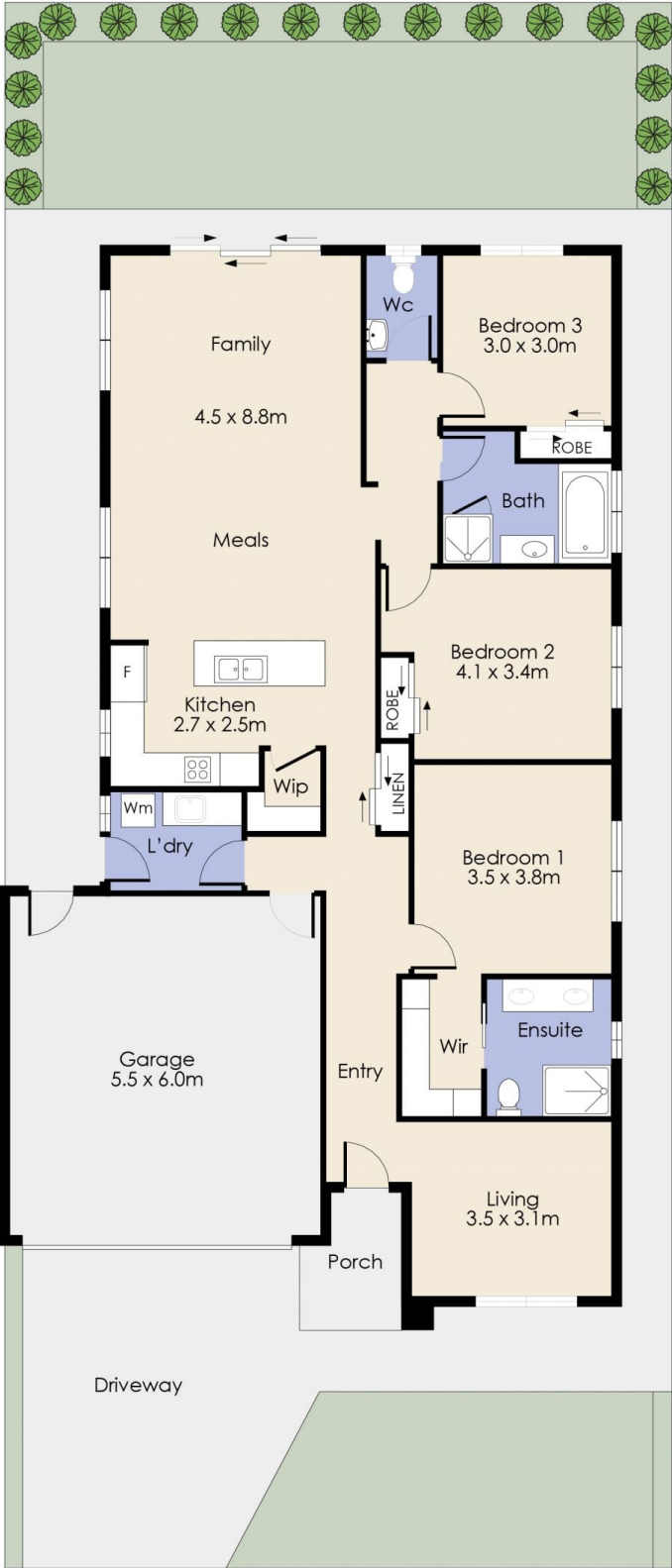


**Ibrahim Ahmed**  
0449 119 577



**Mitch Smit**  
0450 913 513

# 19 Gellibrand Street, WERRIBEE



Whilst every attempt has been made to ensure the accuracy of the floor plan contained here, measurements of doors, windows, rooms and any other item are approximate and no responsibility is taken for any error, omission, or misstatement. This plan is for illustrative purposes only and should be used as such by any prospective purchaser. The services, systems and appliances shown have not been tested and no guarantee as to their operability or efficiency can be given.