

2 Cardell Street Maddingley VIC

4  2  2 

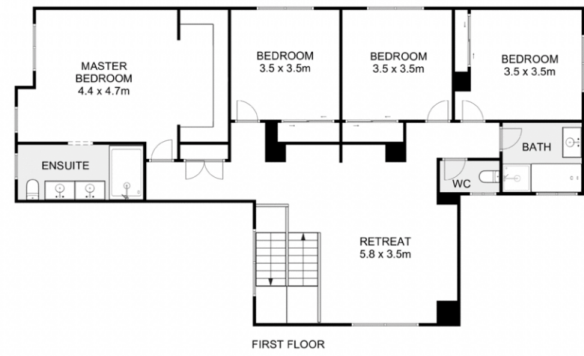
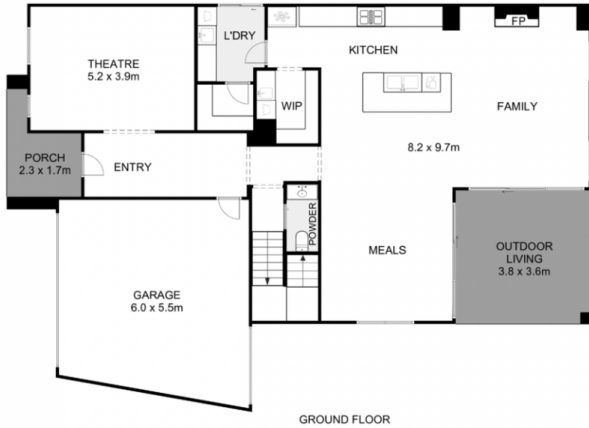
Perfectly positioned within the highly sought-after Stonehill Estate, this stunning double-storey residence on a generous 482m² allotment offers the perfect combination of space and style. Located just moments from shops, restaurants, schools, a medical centre and other local amenities, this home delivers the ultimate in convenient and luxurious family living.

From the moment you step inside, you're greeted with a sense of warmth and elegance, enhanced by hybrid timber flooring, high ceilings and 2340mm high doors throughout the lower level. The home's focal point is the breath-taking vinyl wrap kitchen featuring a huge island bench, pendant lighting, 40mm stone benchtops, an eye-catching splashback, 900mm oven and cooktop, dishwasher, walk in pantry with sink and an abundance of storage. Overlooking the expansive dining and living zones adorned with sheer

Price : \$ 820,000
Land Size : 482 sqm
View : <https://www.ypa.com.au/8546493>



Cory Cassar
0422 765 386



2 Cardell Street, Maddingley

Whilst every attempt has been made to ensure the accuracy of the floor plan contained here, measurements of doors, windows, rooms and any other items are approximate and no responsibility is taken for any error, omission, or mis-statement. This plan is for illustrative purposes only and should be used as such by any prospective purchaser. The services, systems and appliances shown have not been tested and no guarantee as to their operability or efficiency can be given.

