



14 Oat Close Delahey VIC

3 2 1

Welcome to this beautifully maintained home, offering space, comfort, and convenience in a highly sought-after pocket of Delahey

Step inside to find a well-designed floorplan, featuring a master bedroom with a walk-in robe and ensuite, plus remaining bedrooms with built-in robes serviced by a central family bathroom. A separate study area provides the perfect space for working from home or for the kids to study.

The open plan living and dining area flows seamlessly into a generous kitchen, complete with plenty of bench and storage space ideal for both everyday family living and entertaining. Freshly painted throughout and complemented by new carpets, the home instantly feels inviting and ready to move straight in.

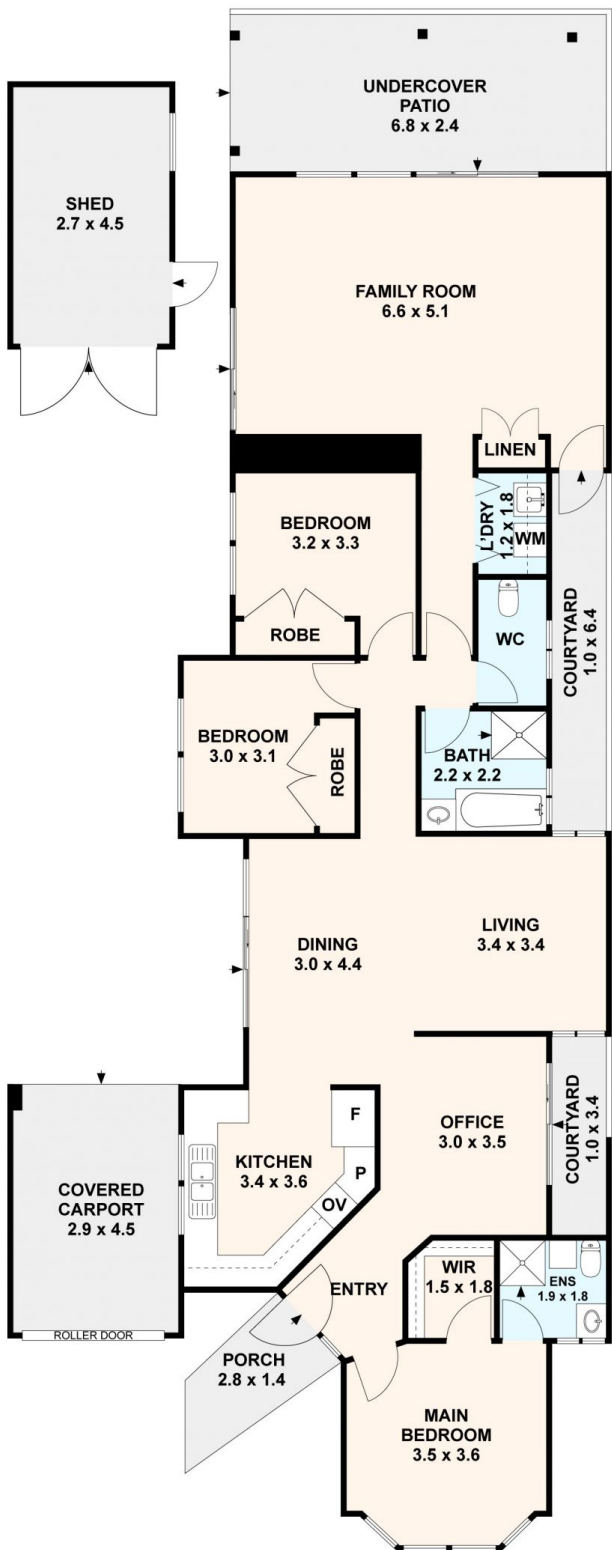
Land Size : 355 sqm
View : <https://www.ypa.com.au/8545999>



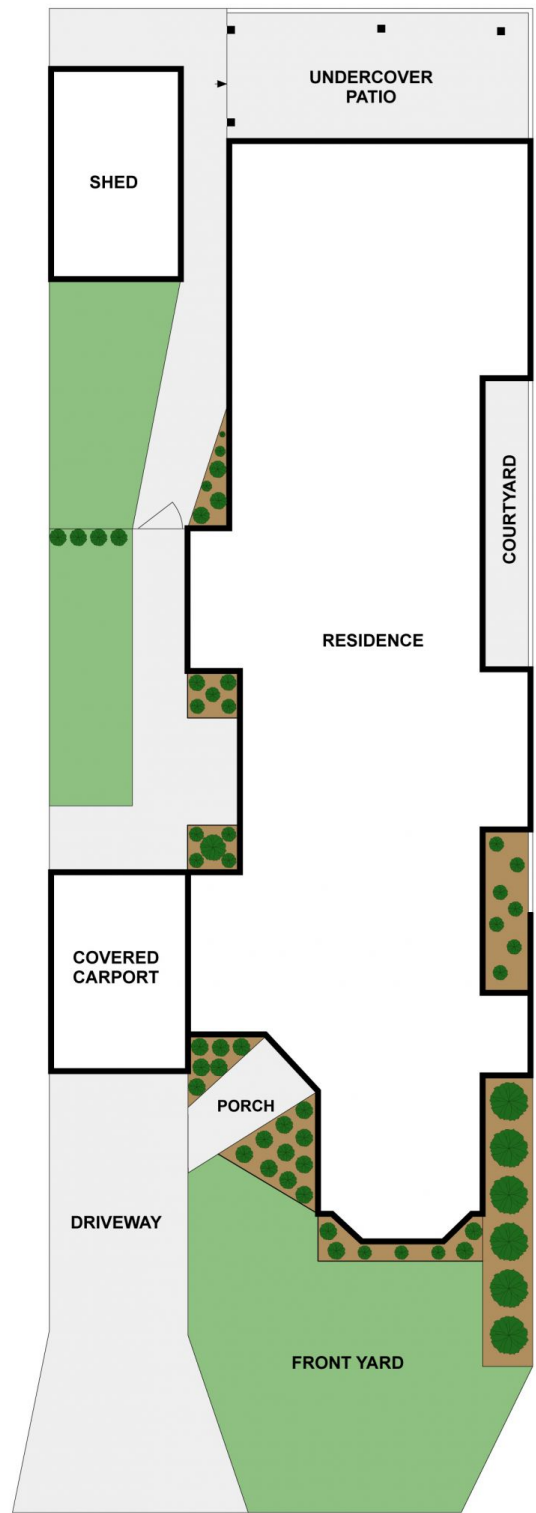
Eddi Bagdadi
0432 208 933



Sam D'Angelo
0403 117 765



GROUND FLOOR



SITEPLAN

14 Oat Close, Delahey VIC 3037, Australia
 All data and dimensions shown in this sketch are approximate.

