



4 Geraldine Street Rye VIC

3 2 4

A coastal sanctuary of calm and convenience, this beautifully positioned residence captures the essence of refined peninsula living just moments from the ocean. Set within one of Rye's most desirable enclaves - just 350m* from the golden sands of Number Sixteen Beach and the iconic Sixteen Beach General Store - 4 Geraldine Street is a private retreat where the rhythm of the waves becomes part of everyday life.

Wake to the scent of salt air and fall asleep to the soothing sound of the ocean, with scenic walking trails, surf breaks and rugged coastline only a short stroll away. Spend long, lazy mornings on the beach, then return to your own coastal haven for sun-drenched lunches on the deck, twilight gatherings by the fire pit and tranquil evenings in the spa beneath a canopy of stars.

Price : \$ 1,150,000
Land Size : 866 sqm
View : <https://www.ypa.com.au/8545620>



Tony Talarico
0420 778 401

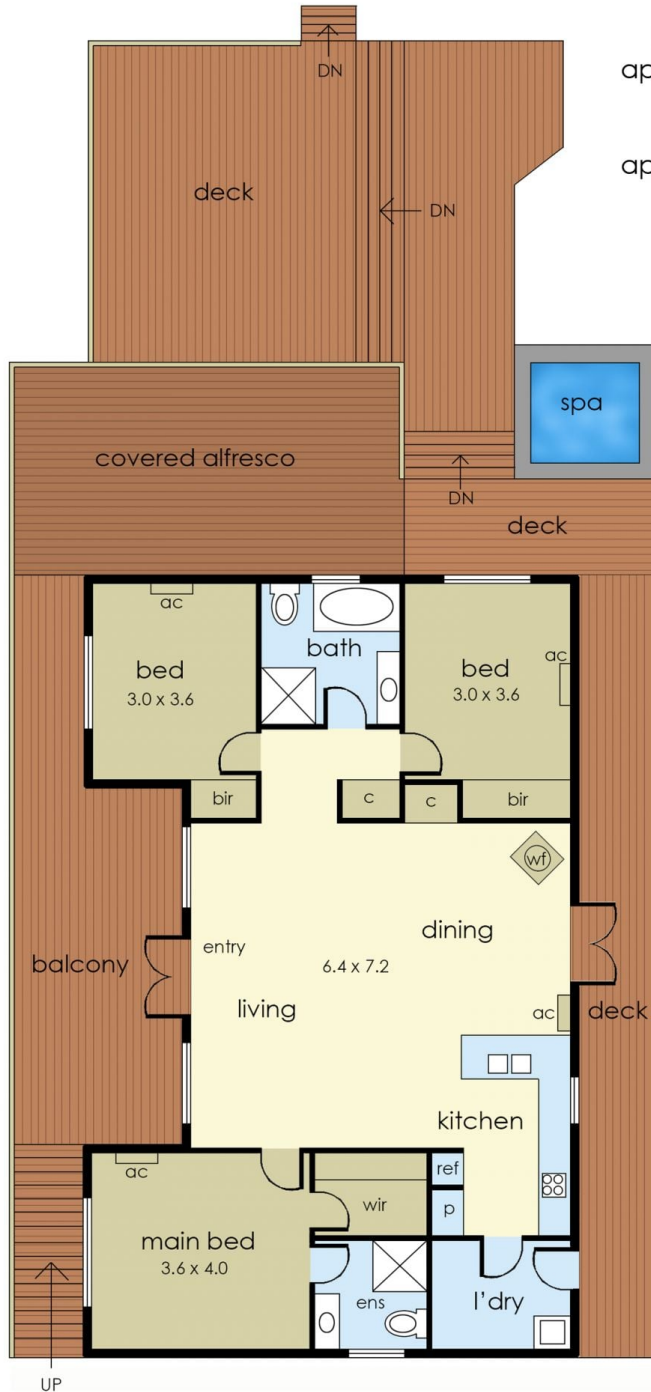


Katrina Talarico
0420 778 404

Internal living area
approx: 12 squares

Decking area
approx: 10 squares

Total area
approx: 22 squares



4 Geraldine Street, Rye

The floor plan is provided for general information and illustrative purposes only. All measurements, dimensions, and layouts are approximate and may vary from the actual property. While every effort has been made to ensure accuracy, no responsibility is taken for any error, omission, or misstatement. Prospective buyers should not rely solely on the floor plan and are encouraged to conduct their own inspections and verify all details independently. The design and content of this floor plan remain the property of DND Floor Plans. ©