



21 Burnleigh Drive Gladstone Park VIC

3  1  1 

SOLD AT AUCTION - WELL ABOVE RESERVE - BY JASON PADULA!

Go to Jason Padula Real Estate on Facebook and YouTube, for all the Auction campaign highlights!

Price : \$ 760,000

Land Size : 572 sqm

View : <https://www.ypa.com.au/8538612>

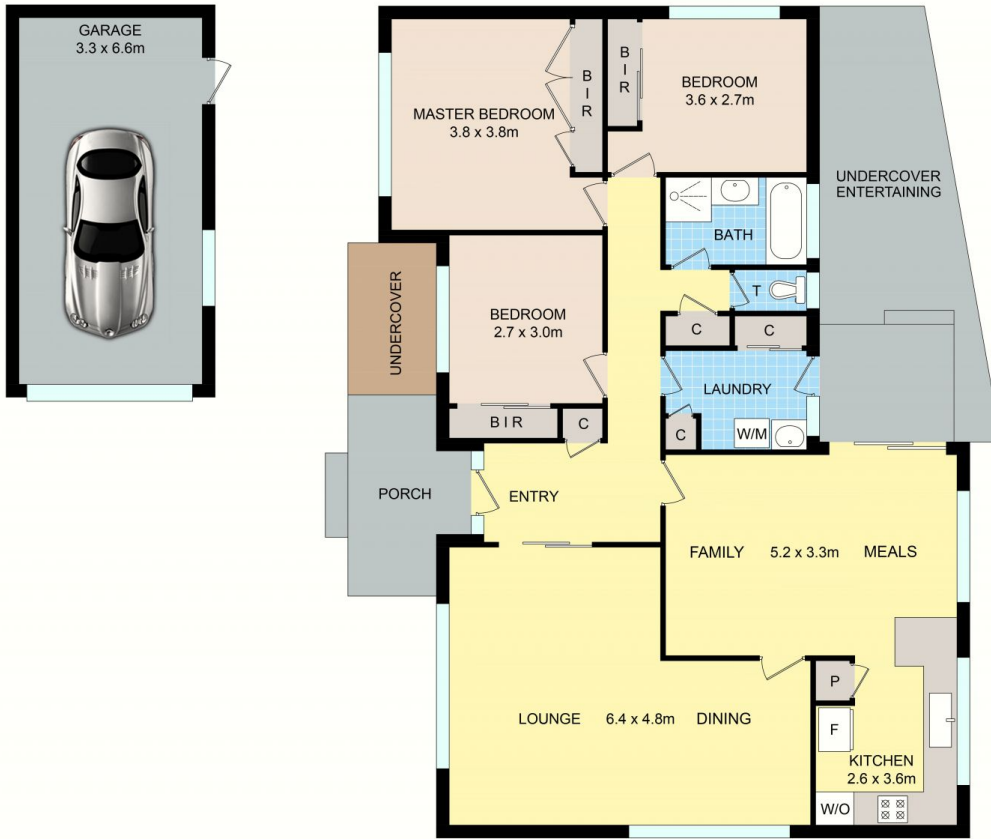
Offered for the first time since 1999, here is an entry-point opportunity to buy into the powerful Gladstone Park market?in one of the suburb's premier streets!

Set on a flat 572m² (approx.) with wide 20m+ frontage, all the necessary boxes are ticked in terms of your options with this classic 70's AV Jennings home in a valuable, strategic locale.

Step inside to a classic layout featuring separate entry foyer, spacious L-shaped lounge/dining and great-sized meals/family area off the kitchen. All three bedrooms are fitted with built-in robes, the laundry boasts loads of



Jason Padula
0402 149 436



21 Burnleigh Dr, Gladstone Park

Disclaimer: Floor plan is for marketing purposes and is to be used as a guide only. Measurements are approximate and for illustrative purposes. Interested parties should make and rely on their own enquiries or refer to contract drawings for more accurate information.