



4 Charles Street Rye VIC

3 2 4

Perfectly positioned just 900m* to the pristine shores of Port Phillip Bay, 4 Charles Street presents an idyllic coastal retreat where space, warmth and relaxed sophistication come together in perfect harmony. This beautifully maintained single level home captures the essence of Mornington Peninsula living where inviting interiors, effortless indoor-outdoor flow, and a setting that celebrates the natural beauty of its surroundings is what you will find.

Behind its charming Tuscan brick façade, the home opens to a light-filled interior defined by tiled floors, generous proportions and a seamless open plan layout. The central living and dining area is enhanced by a cosy wood burning fire and ducted heating and cooling, ensuring comfort in every season. Bifold doors extend to a large timber deck that serves as an entertainer's haven and overlooks an expansive backyard, where established greenery and open

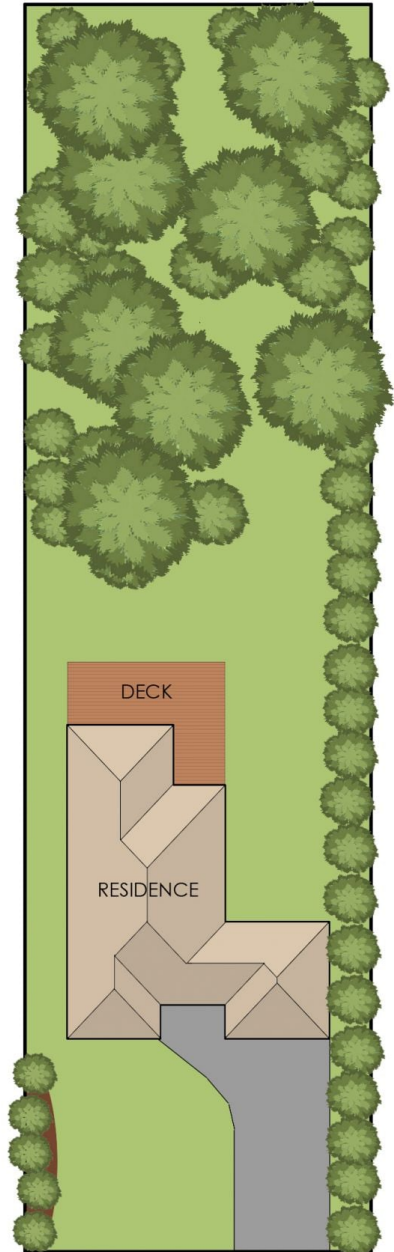
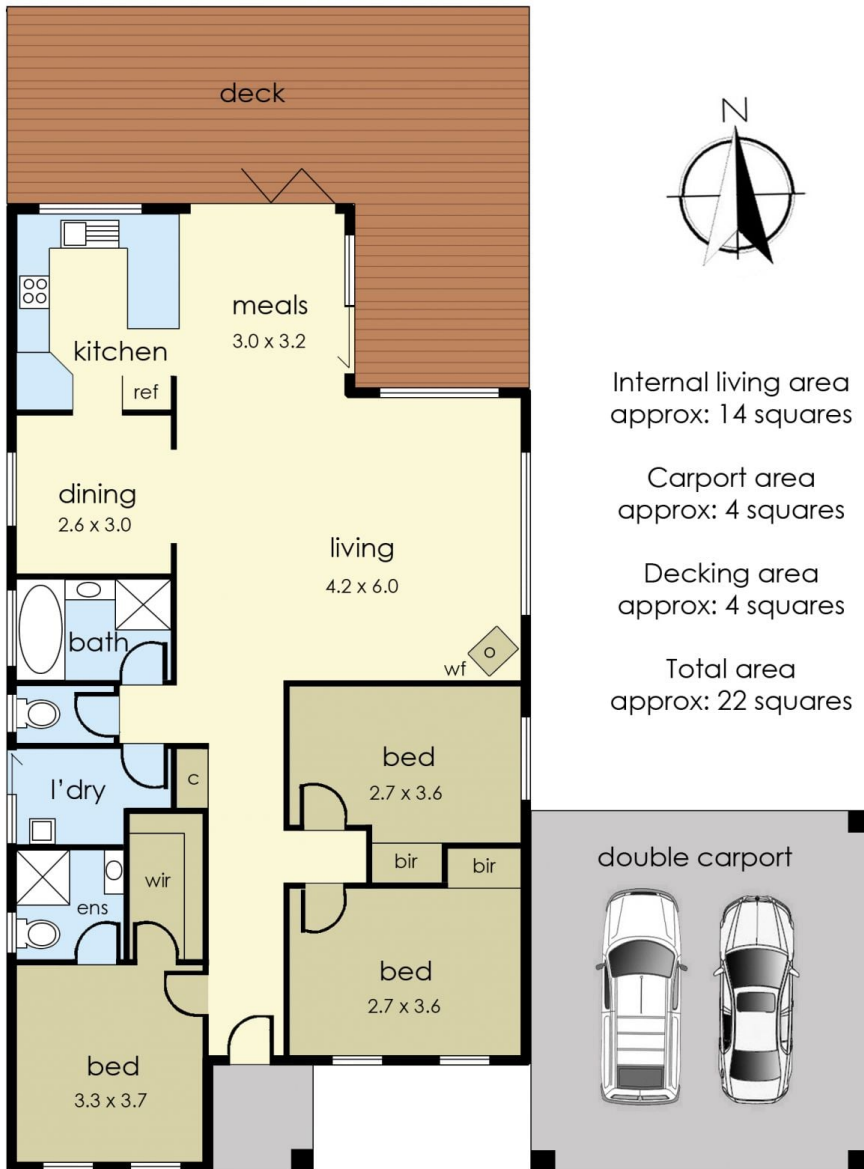
Price : \$ 1,075,000
Land Size : 1288 sqm
View : <https://www.ypa.com.au/8537722>



Jade Springer
0437 410 791



Kelsie Janssen
0417245204



4 Charles Street, Rye

The floor plan is provided for general information and illustrative purposes only. All measurements, dimensions, and layouts are approximate and may vary from the actual property. While every effort has been made to ensure accuracy, no responsibility is taken for any error, omission, or misstatement. Prospective buyers should not rely solely on the floor plan and are encouraged to conduct their own inspections and verify all details independently. The design and content of this floor plan remain the property of DND Floor Plans. ©