



## 62 Wondaree Street Rye VIC

3  1  3 

Perfectly positioned in a peaceful, sought after street just moments from the pristine shores of Port Phillip Bay, this beautifully renovated home at 62 Wondaree Street offers a seamless blend of coastal charm, modern comfort, and low maintenance living. Every element has been carefully curated to create a relaxed yet refined retreat that celebrates the very best of Peninsula life.

Set on a generous allotment measuring approximately 607\*m<sup>2</sup>, the home has been thoughtfully updated throughout with a natural, coastal inspired palette, premium finishes, and a true sense of light and space. The open plan living and dining area welcomes you with its warm, contemporary feel featuring custom cabinetry, a stylish built in entertainment unit, and a cleverly designed window nook that invites quiet moments of rest or connection.

**Price** : \$ 910,000  
**Land Size** : 624 sqm  
**View** : <https://www.ypa.com.au/8537620>



**Jade Springer**  
0437 410 791



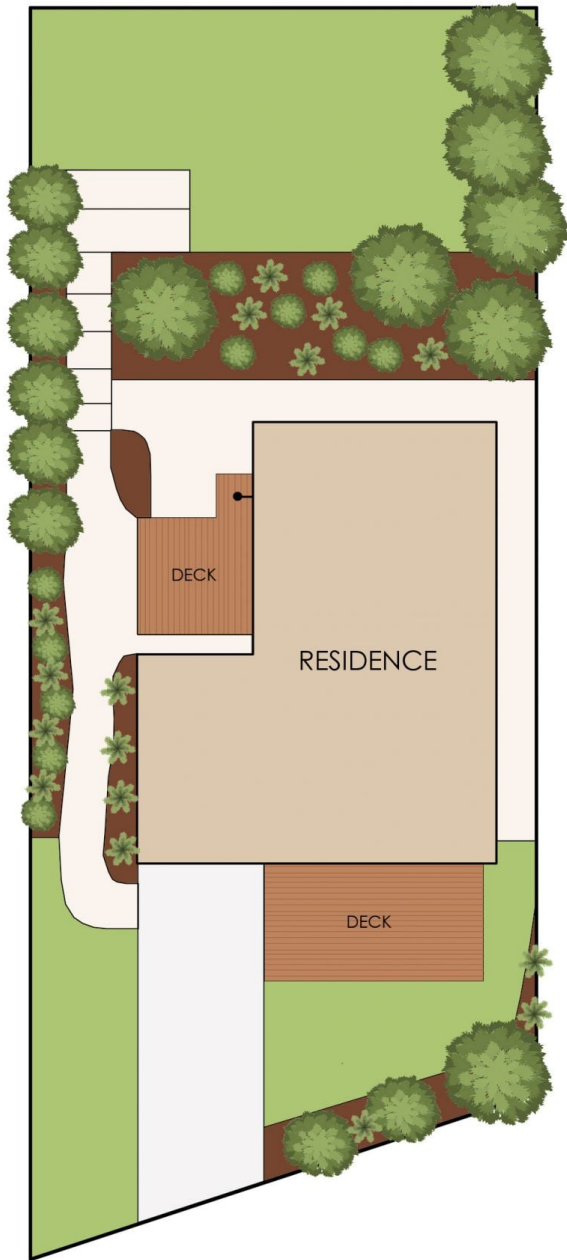
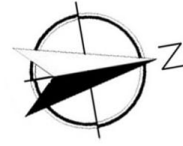
**Kelsie Janssen**  
0417245204

Internal living area  
approx: 12 squares

Decking area  
approx: 5 squares

Carport area  
approx: 2 squares

Total area  
approx: 19 squares



## 62 Wondaree Street, Rye

The floor plan is provided for general information and illustrative purposes only. All measurements, dimensions, and layouts are approximate and may vary from the actual property. While every effort has been made to ensure accuracy, no responsibility is taken for any error, omission, or misstatement. Prospective buyers should not rely solely on the floor plan and are encouraged to conduct their own inspections and verify all details independently. The design and content of this floor plan remain the property of DND Floor Plans. ©