

## 1/46 Russell Street Werribee VIC

2  1  1 

Located just moments from Werribee's best schools, cafés and local favourites, this beautifully presented two-bedroom home delivers space, style, and simplicity all in one.

From the moment you step inside, you'll be surprised by the generous proportions - a bright and open living zone flows seamlessly into a well-designed kitchen and dining area, creating the perfect setting for easy everyday living.

Both bedrooms are extra-large, offering comfort that's rarely found in this price range. The central bathroom is equally impressive, featuring a full bathtub and plenty of room to move.

Freshly painted and ready to enjoy, this home comes with no body corporate fees - giving you freedom and peace of mind.

**Price** : \$ 500,000  
**Land Size** : 268 sqm  
**View** : <https://www.ypa.com.au/8536302>

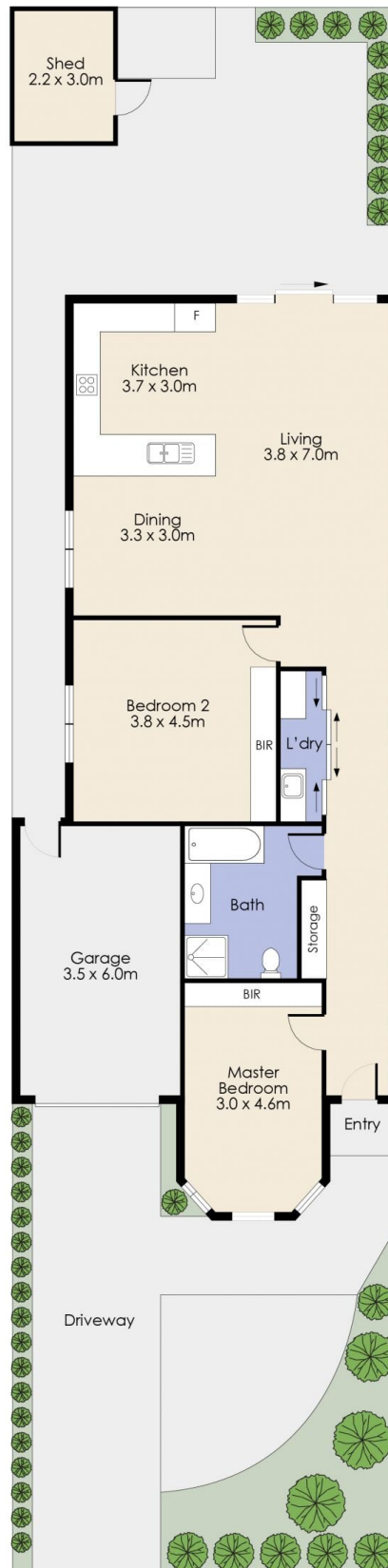


**James Antonio**  
0401 889 248



**Dane Bouch**  
0499 655 382

# 1/46 Russell Street, WERRIBEE



Whilst every attempt has been made to ensure the accuracy of the floor plan contained here, measurements of doors, windows, rooms and any other item are approximate and no responsibility is taken for any error, omission, or misstatement. This plan is for illustrative purposes only and should be used as such by any prospective purchaser. The services, systems and appliances shown have not been tested and no guarantee as to their operability or efficiency can be given.