

29 Campaspe Crescent Brookfield VIC

4 2 2

29 CAMPASPE CRESCENT, BROOKFIELD

Situated in the heart of Brookfield this property sits in close proximity to all that the wonderful estate has to offer. Within walking distance to Melton Christian College, close proximity to Binap Primary School, Melton Train Station, parks and walking tracks and easy Western Freeway access.

Situated on over a 1200m² (approx.) parcel of land, this home is sure to impress with its size, functionality and overall family environment. As you walk up to the property the freshly landscaped front yard greets you, the impressive façade and original bricks stand tall providing a grand entrance to your new home.

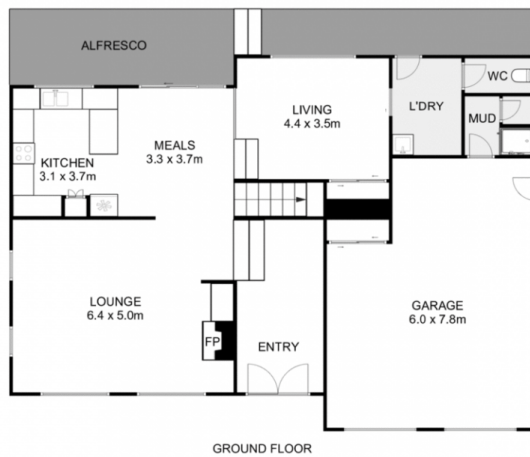
Entering the property, you will be met with a entrance/foyer area, this leads you into the main living hub, which is huge

Land Size : 1218 sqm

View : <https://www.ypa.com.au/8534944>



Ricky Frew
0402 007 100



29 Campaspe Crescent, Brookfield

YPA

Whilst every attempt has been made to ensure the accuracy of the floor plan contained here, measurements of doors, windows, rooms and any other items are approximate and no responsibility is taken for any error, omission, or mis-statement. This plan is for illustrative purposes only and should be used as such by any prospective purchaser. The services, systems and appliances shown have not been tested and no guarantee as to their operability or efficiency can be given.

