



21 Lady Penrhyn Drive Wyndham Vale VIC

4  2  2 

Perfectly positioned in a quiet, family-friendly pocket of Wyndham Vale, this inviting four-bedroom home offers comfort, space, and modern convenience. Thoughtfully designed, it's ideal for families seeking a home that caters to both relaxation and practicality.

Enjoy the convenience of being close to schools, childcare facilities, shopping centres, and local parks, with easy access to Wyndham Vale Train Station and major roads connecting you to Werribee and beyond.

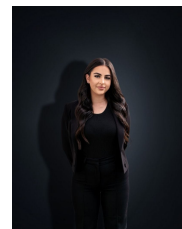
PROPERTY FEATURES!

- ? Four spacious bedrooms, including a master with private ensuite and walk-in robe
- ? Central family bathroom with separate toilet
- ? Light-filled open-plan living and dining area
- ? Functional kitchen with ample storage and quality appliances

View : <https://www.ypa.com.au/8531123>



Ashley Gates
0424 267 675



Stefanie Zahra
0406 871 722