

8 Clyde Court Sunbury VIC

3  2  1 

Situated in a quiet court location in the popular Goonawarra Estate, this home is perfect for first-home buyers, downsizers, or investors alike offering comfort, convenience, and great potential to add your special touch.

Price : \$ 545,000
Land Size : 303 sqm
View : <https://www.ypa.com.au/8527434>

Inside, you'll find a comfortable lounge area leading through the hall to a kitchen and dining zone. The kitchen is equipped with a gas cooktop and oven, ample cupboard space, space for a dishwasher, and a double-door pantry, perfect for ample storage.

The master bedroom offers a walk-in robe and ensuite, while the two additional bedrooms each include built-in robes. The main bathroom is complete with a separate toilet for added convenience.

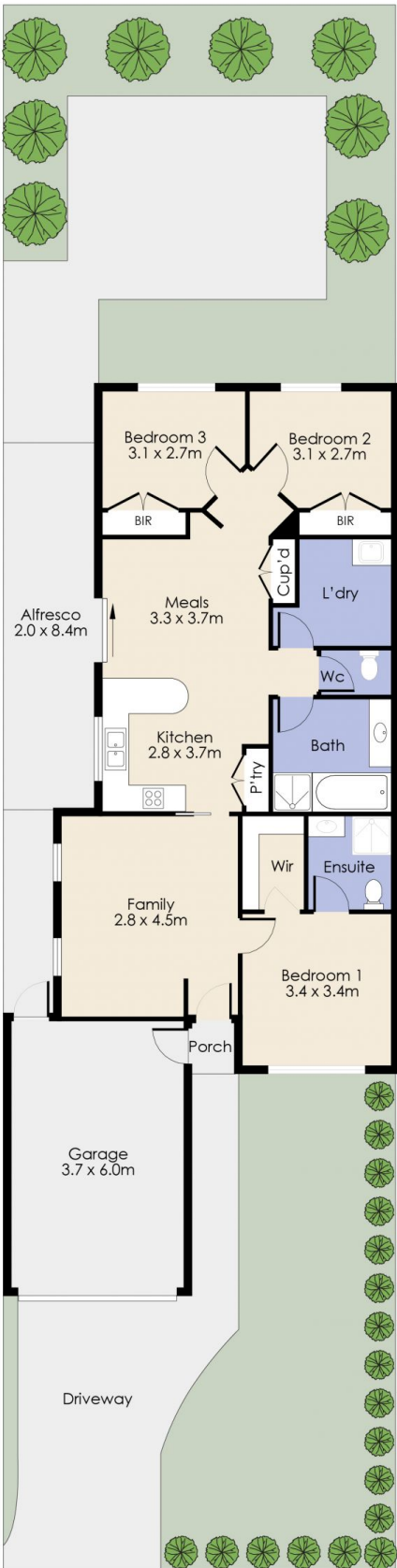


Lisa Totaro
0410 144 215



Cassandra Doria
0497 972 028

8 Clyde Court, SUNBURY



Whilst every attempt has been made to ensure the accuracy of the floor plan contained here, measurements of doors, windows, rooms and any other item are approximate and no responsibility is taken for any error, omission, or misstatement. This plan is for illustrative purposes only and should be used as such by any prospective purchaser. The services, systems and appliances shown have not been tested and no guarantee as to their operability or efficiency can be given.