



## 2 Alkington Way Werribee VIC

4  2  2 

Nestled in the popular Harpley Estate, this near-new MIMOSA-built home delivers the perfect blend of space, style, and convenience - ideal for growing families and situated on an impressive corner allotment of 438m<sup>2</sup> (approx.) of land.

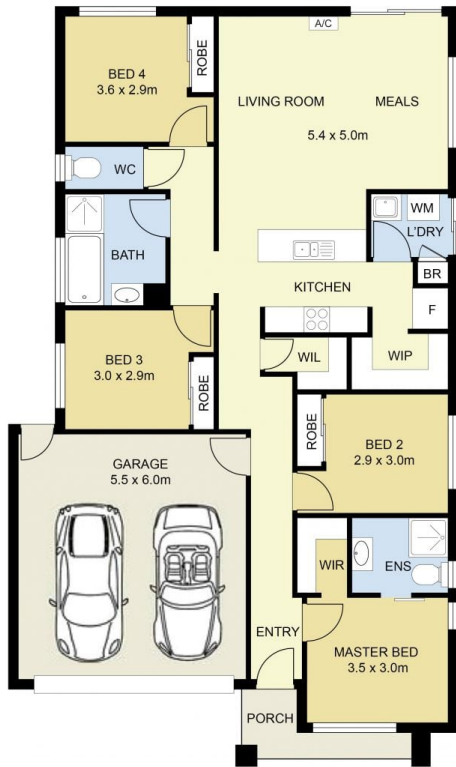
Boasting four generous bedrooms, the home is designed for comfort and functionality. The master bedroom features a walk-in robe and a private ensuite with an oversized shower; the remaining three bedrooms all include built-in robes and are serviced by a sleek central bathroom.

At the heart of the home is the light-filled open-plan kitchen, meals, and living area - a welcoming space for everyday family life and entertaining. The stylish kitchen includes 900mm stainless steel appliances (upright cooker, rangehood, and dishwasher), a spacious walk-in pantry,

**Price** : \$ 710,000  
**Land Size** : 438 sqm  
**View** : <https://www.ypa.com.au/8525923>



**Joel Rawle**  
0416 165 473



SITE PLAN  
(NOT TO SCALE)



## 2 Alkington Way, Werribee

DISCLAIMER : ALL DIMENSIONS ARE AN APPROXIMATION ONLY AND NO GUARANTEE IS GIVEN WITH RESPECT TO ACCURACY.