

1625-1629 Point Nepean Road Capel Sound VIC

An exceptional opportunity awaits to secure a high-exposure commercial property in the heart of Capel Sound's thriving retail, hospitality, and lifestyle precinct. Perfectly positioned directly across from the beach, this blue-chip freehold offers immediate investment security and exciting future development potential (STCA) in one of the Mornington Peninsula's most dynamic growth corridors.

This property commands prominent street frontage in a highly visible and tightly held commercial strip, ensuring maximum exposure to steady vehicular and pedestrian traffic year-round. With ample street parking at both the front and rear, access and convenience are second to none - making it a preferred destination for local patrons, visitors, and holidaymakers alike.

Currently occupied by a well-established, long-term tenant,

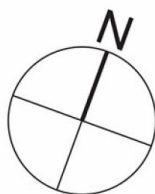
Price : \$ 1,300,000
Building Size : 338 sqm
Land Size : 572 sqm
View : <https://www.ypa.com.au/8523536>



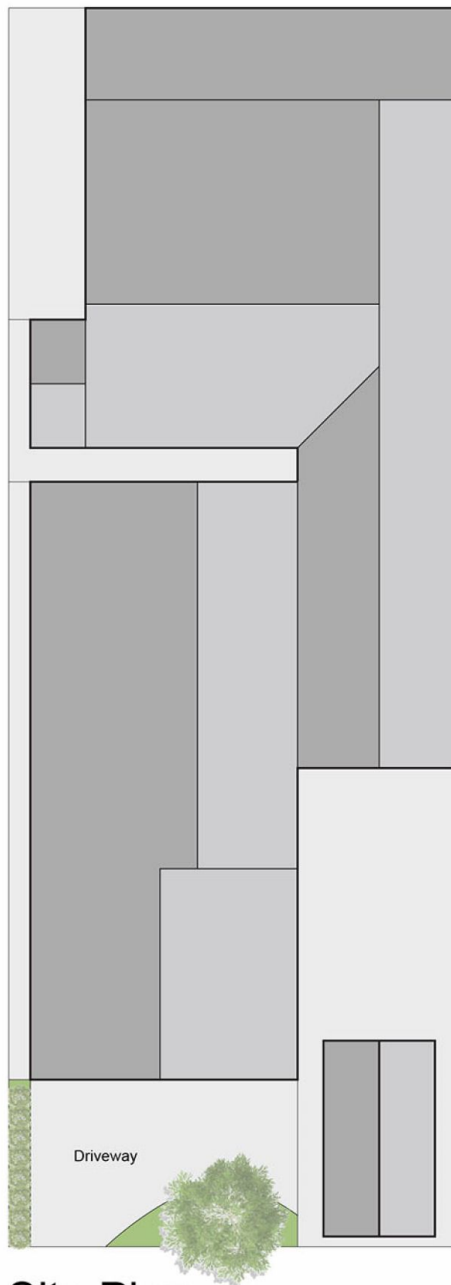
Elke Remscheid
0423 211 315



Nic Apostolidis
0406 796 580



Pt Nepean Rd



Floor Plan

Site Plan

1625-1629 Point Nepean Road, Capel Sound

This floorplan is for illustration purposes only and no warranty is given to its accuracy. Purchasers are advised to carry out their own investigations. Produced by realtywriters (03) 5970 2222