

20 Granada Drive Tarneit VIC

6 3 2

This beautifully maintained, modern family home offers an abundance of space and lifestyle-perfect for larger or growing families. With six bedrooms, three bathrooms, and a double garage, the flexible floor plan ensures space for every need.

The well-appointed kitchen flows seamlessly into the open-plan dining and living areas, ideal for entertaining and day-to-day family life. The easy-care yard offers low-maintenance enjoyment, perfect for families.

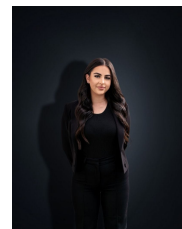
Prime Location Perks:

? Just a short walk to Riverdale Village Shopping Centre, offering cafes, eateries, groceries, and everyday essentials ? Close proximity to Tarneit Train Station, Tarneit Central Shopping Centre, multiple schools, childcare, and parkland

View : <https://www.ypa.com.au/8522056>



Ashley Gates
0424 267 675



Stefanie Zahra
0406 871 722