

2 Douglas Close Darley VIC

3  2  2 

Set on a generous 768m² (approx.) in one of Darley's most peaceful pockets, this inviting family home perfectly balances space, comfort and privacy - the ideal retreat for those seeking relaxed living without compromise.

Tucked away with no direct neighbours, you'll fall in love from the moment you arrive. The beautifully landscaped front garden sets a welcoming tone, while inside, soaring high ceilings and natural light create an instant sense of warmth and openness.

The home's clever design delivers three bedrooms, including a spacious master with walk-in robe and ensuite. The additional bedrooms each feature built-in robes and soft carpeting, serviced by a bright central bathroom with separate toilet. A dedicated study offers flexibility for those working from home or needing an extra zone for quiet

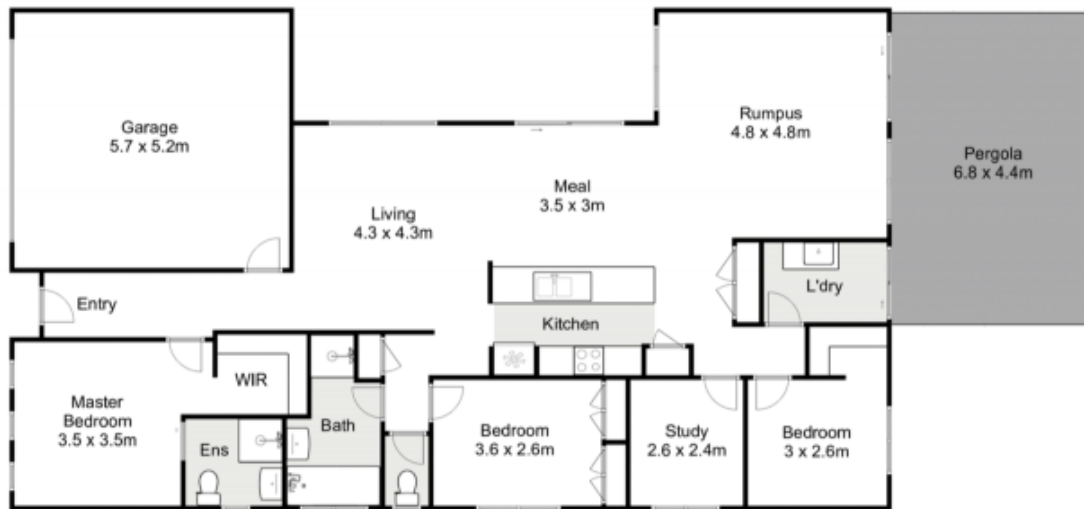
Price : \$ 750,000
Land Size : 768 sqm
View : <https://www.ypa.com.au/8516459>



Jodi Nash
0419 342 120



Bethany Noyce
0427 604 358



2 Douglas Close, Darley



Whilst every attempt has been made to ensure the accuracy of the floor plan contained here, measurements of doors, windows, rooms and any other items are approximate and no responsibility is taken for any error, omission, or mis-statement. This plan is for illustrative purposes only and should be used as such by any prospective purchaser. The services, systems and appliances shown have not been tested and no guarantee as to their operability or efficiency can be given.

