



2 Catherine Drive HILLSIDE VIC

5 3 2

Located in the highly sought-after suburb of Hillside and set on a generous 696m² (approx.) block, this beautifully presented home offers exceptional space, comfort, and flexibility for the modern family. With 5 bedrooms, 3 bathrooms, and a double garage, this home is perfect for large or multi-generational living.

A rare and thoughtful design includes two master suites ? one conveniently positioned downstairs and another upstairs ? both featuring their own private ensuites and spacious walk-in robes. Whether it's for extended family, guests, or your own private sanctuary, this dual-master setup provides unbeatable versatility.

Step inside and enjoy a flowing floorplan with two generous living areas downstairs, a dedicated study, and an upstairs retreat ? providing plenty of room for work, relaxation, and

Price : \$ 781,000

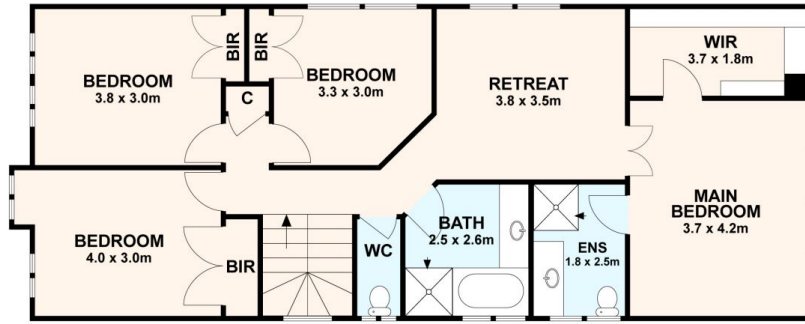
View : <https://www.ypa.com.au/8506777>



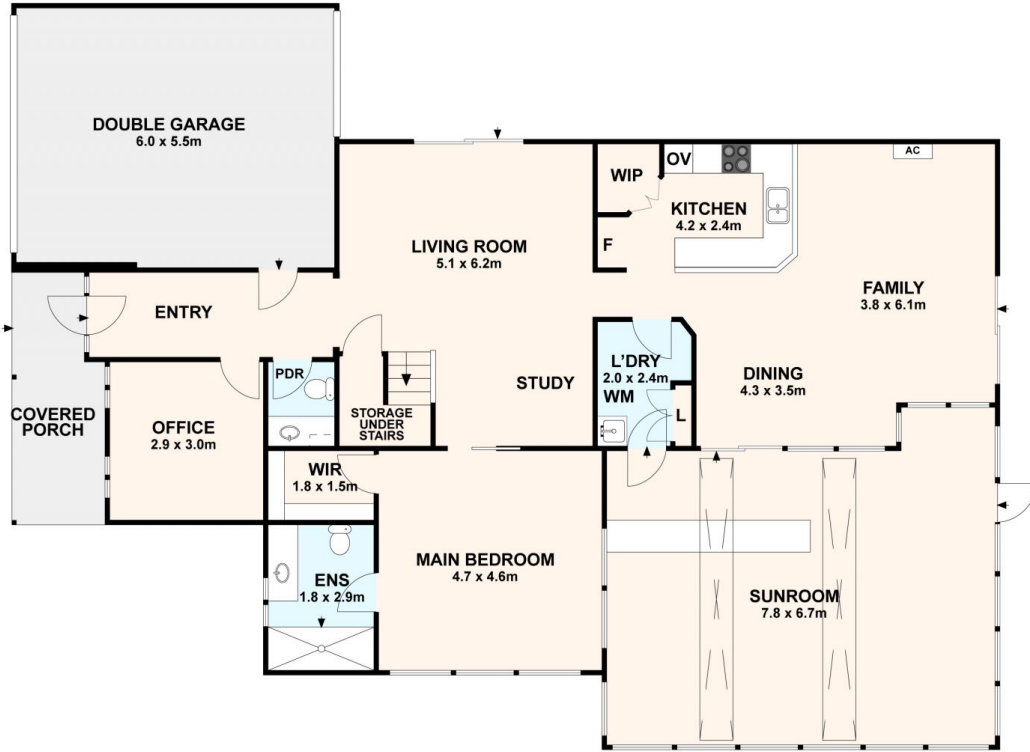
Eddi Bagdadi
0432 208 933



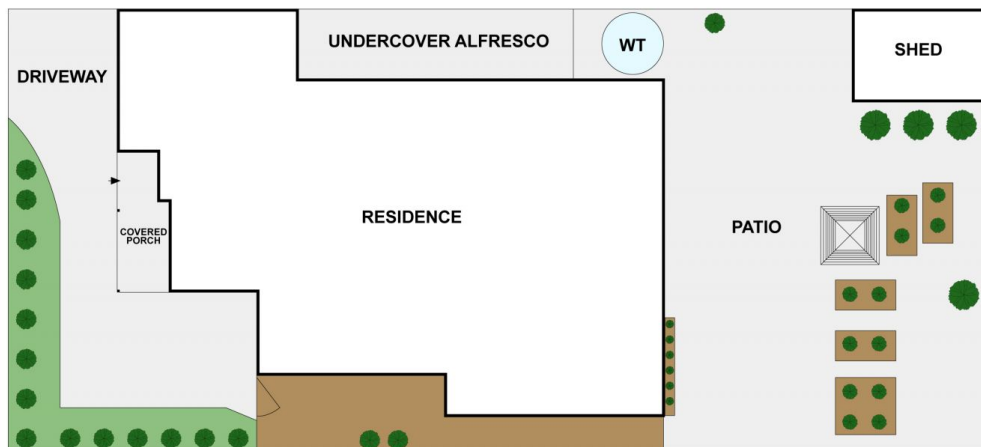
Nancy Crupi
0413 969 284



FIRST FLOOR



GROUND FLOOR



SITEPLAN

2 Catherine Drive, Hillside

All data and dimensions shown in this sketch are approximate.

