



27 Tallinga Street Tarneit VIC

4  2  2 

This well-maintained home offers generous living spaces and modern features, making it an excellent choice for families seeking comfort and convenience. Ideally located near Tarneit Rise Primary School, Tarneit P-9 College, Tarneit Gardens Primary School, Tarneit Gardens Shopping Centre, Riverdale Shopping Centre, local parks, and Tarneit Train Station, everything you need is right at your doorstep with easy access to Melbourne's CBD.

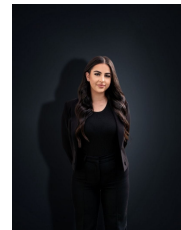
Property Features:

- ? Open-plan living and dining area filled with natural light
- ? Modern kitchen with stone bench-tops, breakfast bar, stainless steel appliances (gas cooktop, oven, dishwasher), and ample storage
- ? 4 spacious bedrooms with built-in robes, including master with walk-in robe and private ensuite
- ? Central family bathroom with bathtub and separate

View : <https://www.ypa.com.au/8505415>

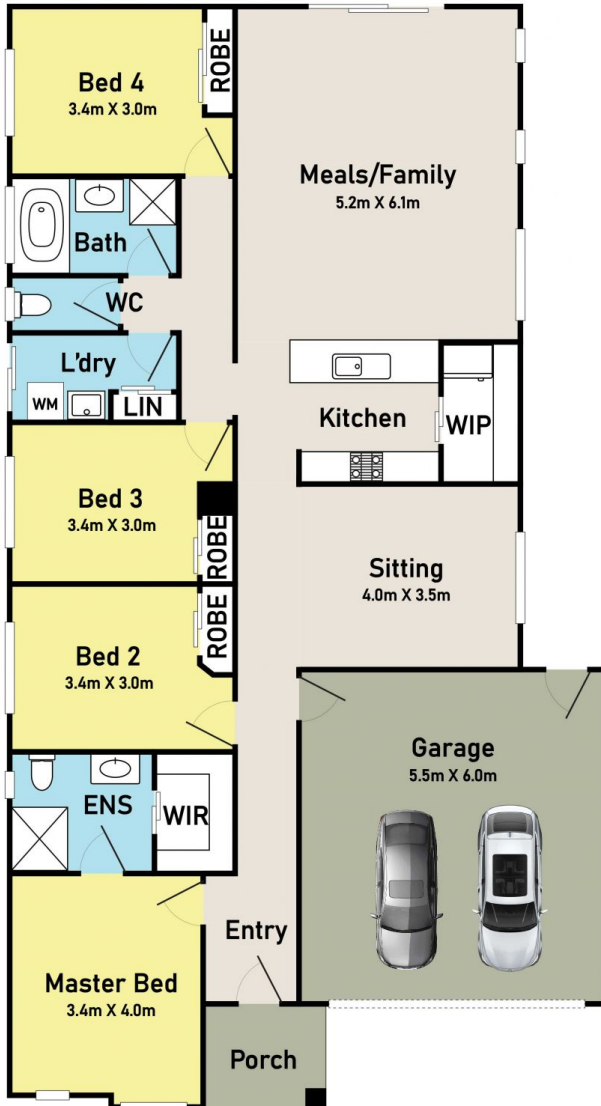


Ashley Gates
0424 267 675

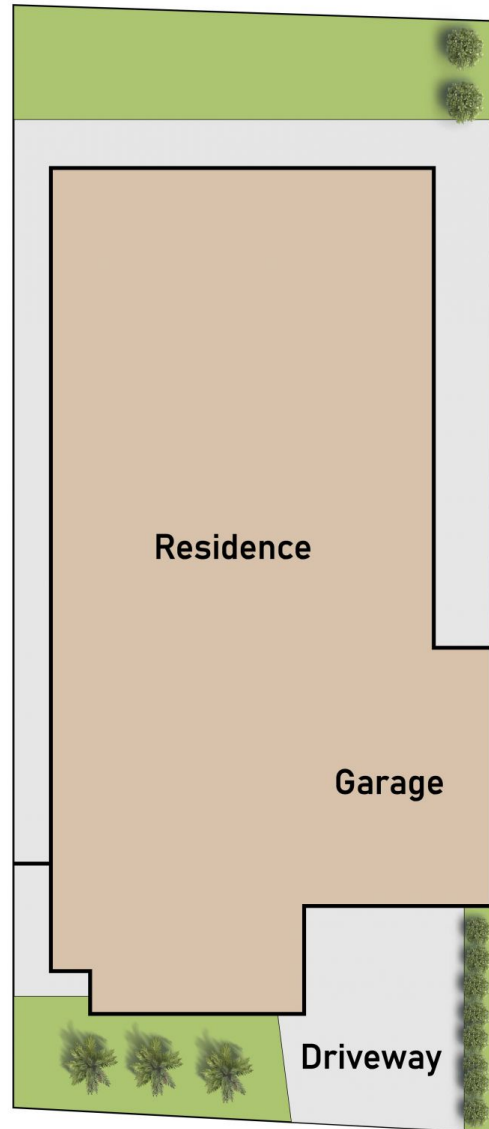


Stefanie Zahra
0406 871 722

Floor Plan



Site Plan



27 Tallinga Street, Tarneit

Floor and Site Plan is for illustrative purposes only and not to scale. The vendor, agency or supplier make no guarantee, warranty or representation as to the accuracy of any information contained herein and the completeness of the floor planned will accept no liability for its accuracy. Interested parties are advised to make their own independent enquiries.

ypa