

15 Pagnocolo Street Werribee VIC

3 1 2

Located in the highly sought after 'Southside of Werribee' region with easy access to all freeways, traffic is eliminated.

Perfectly located in close proximity to but not limited to:

- Werribee CBD, Cafes, restaurants and shops (3 min drive 1.1KM)
- Werribee secondary school (4min drive 2.2KM)
- Werribee primary school (1min drive 700M)
- MacKillop College (3min drive 1.5KM)
- Werribee train station (5min drive 2.2KM)

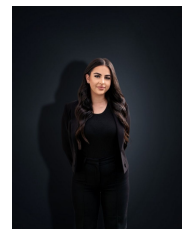
Incredibly positioned and zoned for Werribee's most elite schools this home offers;

Three large bedrooms, Central bathroom, Lounge room, Kitchen/Meals area, Loads of off street parking, Outdoor

View : <https://www.ypa.com.au/8496552>



Ashley Gates
0424 267 675



Stefanie Zahra
0406 871 722