

23 Butler Court Bacchus Marsh VIC

3  2  2 

Tucked away in a peaceful pocket of the highly sought-after Bellevue Estate, this stylish 5 year old home with 3 bedrooms and 2 bathrooms is one that truly ticks all the boxes. The low-maintenance gardens create a welcoming first impression, leading you inside where quality flooring sets the tone for the rest of the home.

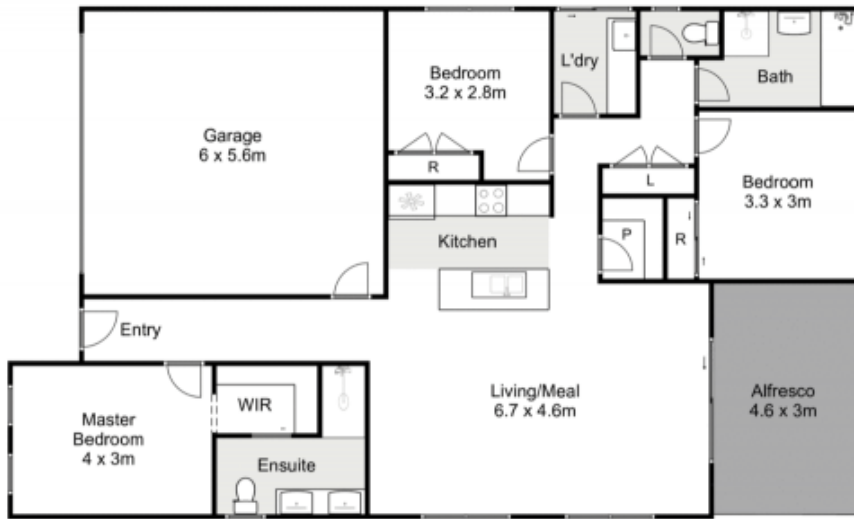
At the heart of the property is a well-designed kitchen complete with generous meals area, sleek cabinetry, a 900mm freestanding oven, stainless steel dishwasher, and striking tiled splashback - perfect for both everyday living and entertaining.

The thoughtful design continues with three spacious bedrooms, all with built-in robes. The main suite stands out with its large walk-in robe and private ensuite with oversized shower. Throughout the home you'll also notice

Price : \$ 630,000
Land Size : 427 sqm
View : <https://www.ypa.com.au/8494961>



Jodi Nash
0419 342 120



23 Butler Court, Bacchus Marsh



Whilst every attempt has been made to ensure the accuracy of the floor plan contained here, measurements of doors, windows, rooms and any other items are approximate and no responsibility is taken for any error, omission, or mis-statement. This plan is for illustrative purposes only and should be used as such by any prospective purchaser. The services, systems and appliances shown have not been tested and no guarantee as to their operability or efficiency can be given.

