



44 St Andrews Drive Rye VIC

4 2 1

Set above Rye's exclusive Tyrone Foreshore, this stylish four-bedroom home enjoys some of the Peninsula's most breathtaking & uninterrupted panoramic views. From the Melbourne skyline to the rugged cliffs of Queenscliff, every outlook captures the magic of Port Phillip Bay and its ever-changing beauty.

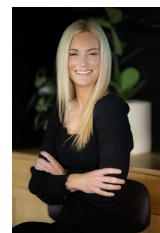
Occupying a generous 815m² (approx.) allotment, the home is designed to take full advantage of the stunning bay backdrop, with expansive windows and outdoor living spaces that frame glittering waters and spectacular sunsets.

Offering versatility for a permanent residence, a luxury holiday retreat, or a strong investment option, this two-storey home places you within easy reach of both bay and surf beaches, Peninsula Hot Springs, award-winning

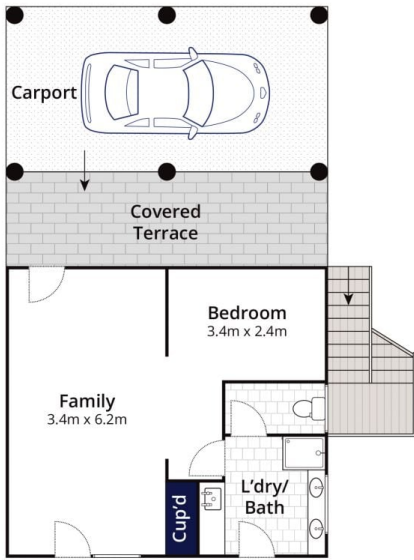
Price : \$ 1,025,000
Land Size : 815 sqm
View : <https://www.ypa.com.au/8488870>



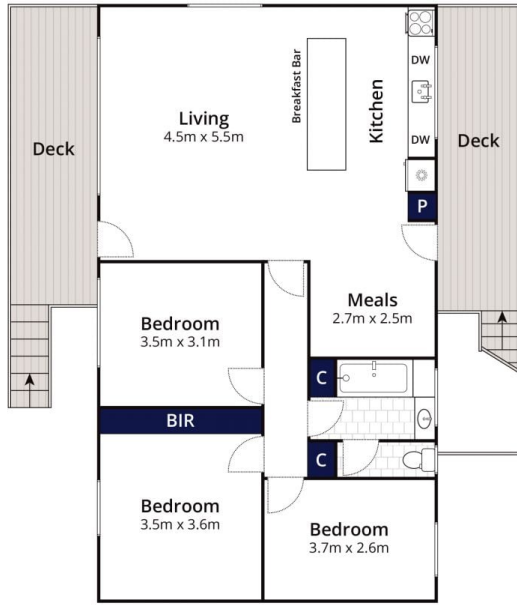
Tony Talarico
0420 778 401



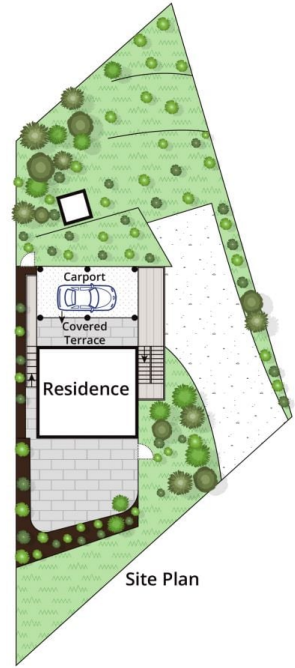
Katrina Talarico
0420 778 404



Ground Floor



First Floor



Site Plan

Approx House Area 138m²
Approx Land Area 814m²

Whilst bwr.com.au has made every attempt to ensure the accuracy of the floor plan contained here, measurements are approximate and no responsibility is taken for any error, omission, or mis-statement. This plan is for illustrative purposes only.

44 St Andrews Drive, Rye