



## 39 McDonald Road Rye VIC

3 2 2

Just 1.1km (approx.) from the golden sands of Rye Foreshore and village, this retro home offers a unique opportunity to create the ultimate holiday escape or coastal renovation project. Enjoying a fantastic vantage point on elevated foundations, the home captures a relaxed seaside character while offering practical features and room to expand.

Inside, the home comprises three bedrooms and two bathrooms, with one bathroom located separately from the main residence. The kitchen features striking ruby tiles, and a classic Majestic Deluxe chef oven/stove, perfectly blending charm with functionality.

A refurbished deck provides a peaceful outlook, making it a great space for entertaining or enjoying the surrounding coastal atmosphere. Underneath the home, you'll find a

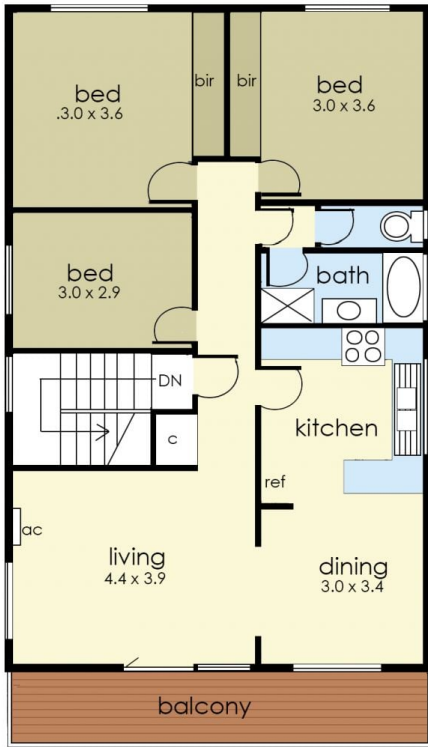
**Price** : \$ 720,000  
**Land Size** : 766 sqm  
**View** : <https://www.ypa.com.au/8482555>



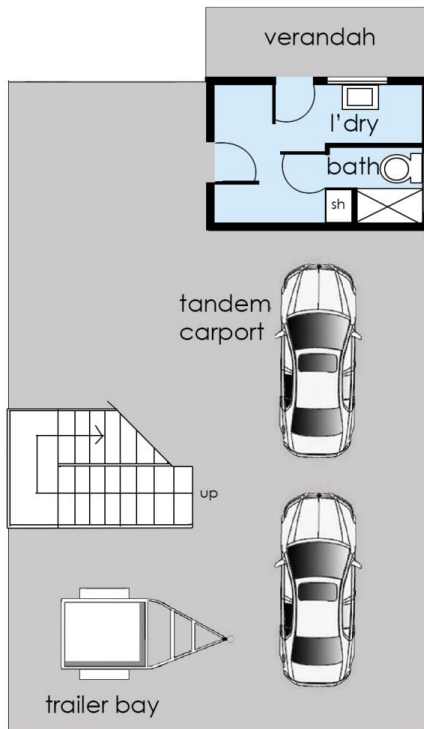
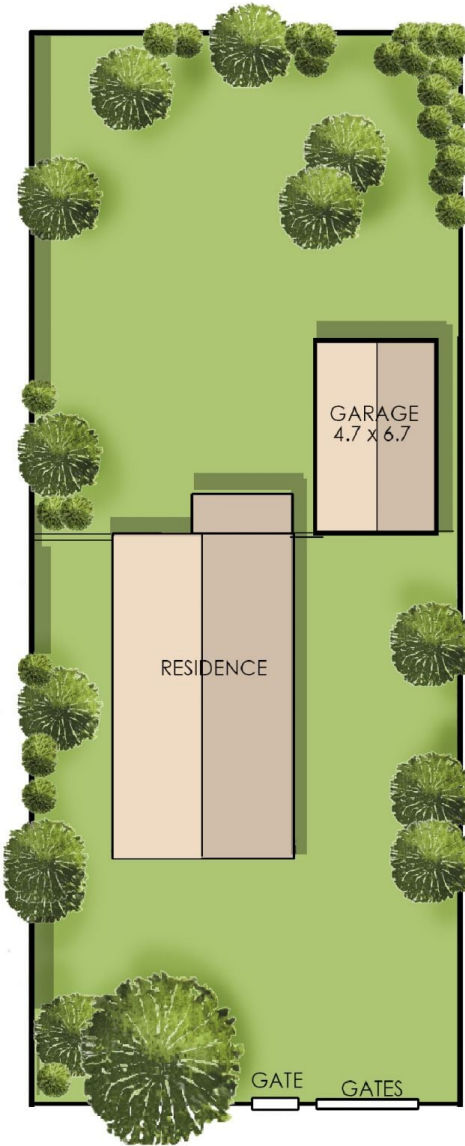
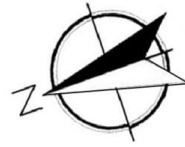
**Tony Talarico**  
0420 778 401



**Katrina Talarico**  
0420 778 404



FIRST FLOOR



GROUND FLOOR

## 39 McDonald Road, Rye

The floor plan is provided for general information and illustrative purposes only. All measurements, dimensions, and layouts are approximate and may vary from the actual property. While every effort has been made to ensure accuracy, no responsibility is taken for any error, omission, or misstatement. Prospective buyers should not rely solely on the floor plan and are encouraged to conduct their own inspections and verify all details independently. The design and content of this floor plan remain the property of DND Floor Plans. ©