

4 Bigelow Court Rye VIC

2 2 6

Located just approx. 650 metres from the beach, this beautifully presented weatherboard home offers the perfect blend of relaxed coastal living and modern convenience. Positioned in a quiet, family-friendly court on a generous 808m² (approx.) allotment, this property is ideal for downsizers, investors, or those seeking a peaceful holiday escape.

Inside, the home has been thoughtfully renovated and features two generous-sized bedrooms, including a master with its own private ensuite. Both bathrooms are stylishly updated with modern finishes and a fresh, clean feel.

Floating floorboards flow throughout the light-filled interior, adding warmth and character. The kitchen is fresh and well-equipped, offering a gas cooktop, dishwasher, and plenty of storage - ideal for easy everyday living and

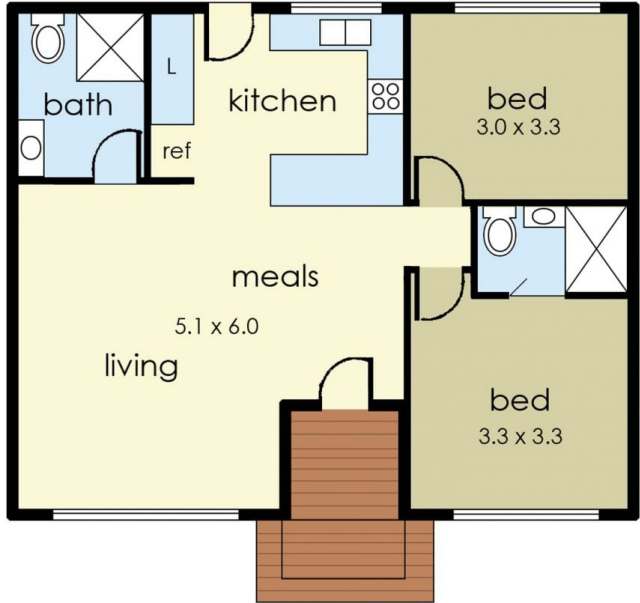
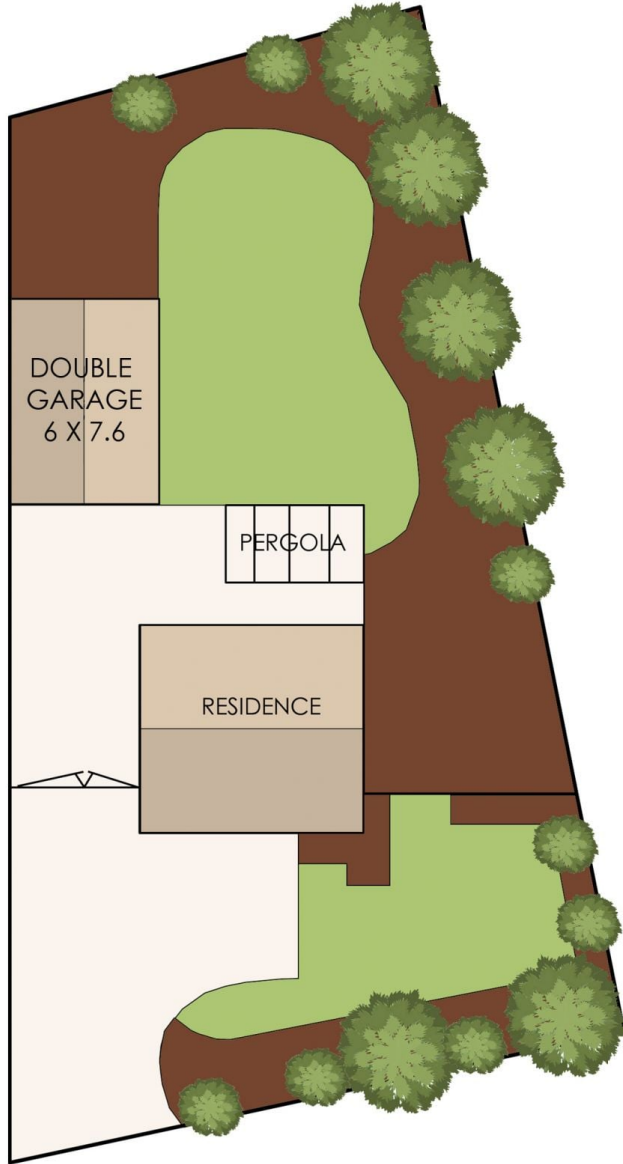
Price : \$ 895,000
Land Size : 808 sqm
View : <https://www.ypa.com.au/8477780>



Jade Springer
0437 410 791



Kelsie Janssen
0417245204



Internal living area
approx: 8 squares

Garage area
approx: 5 squares

Total area
approx: 13 squares



4 Bigelow Court, Rye

The floor plan is provided for general information and illustrative purposes only. All measurements, dimensions, and layouts are approximate and may vary from the actual property. While every effort has been made to ensure accuracy, no responsibility is taken for any error, omission, or misstatement. Prospective buyers should not rely solely on the floor plan and are encouraged to conduct their own inspections and verify all details independently. The design and content of this floor plan remain the property of DND Floor Plans. ©