

16 Southwick Boulevard Altona Meadows VIC

3 2 2

Nirav & Pardeep from YPA Point Cook proudly present this well-maintained brick residence, superbly positioned in one of Altona Meadows' most convenient pockets. Set on a generous 464sqm (approx.) allotment and just 250m from Central Square Shopping Centre, this property offers the perfect balance of immediate comfort with exciting potential to update and add your own personal touch.

Offering 3 bedrooms, 2 spacious living zones, 2 bathrooms, a double garage, and a massive backyard, this home is the ideal choice for families, investors, or renovators.

Step inside to discover a light-filled lounge framed by floor-to-ceiling windows, creating a warm and inviting atmosphere. The open-plan meals and kitchen area, complete with gas cooktop and ample storage, seamlessly connects to the spacious rear garden, delivering the highly

Price : \$ 765,000
Land Size : 465 sqm
View : <https://www.ypa.com.au/8475393>

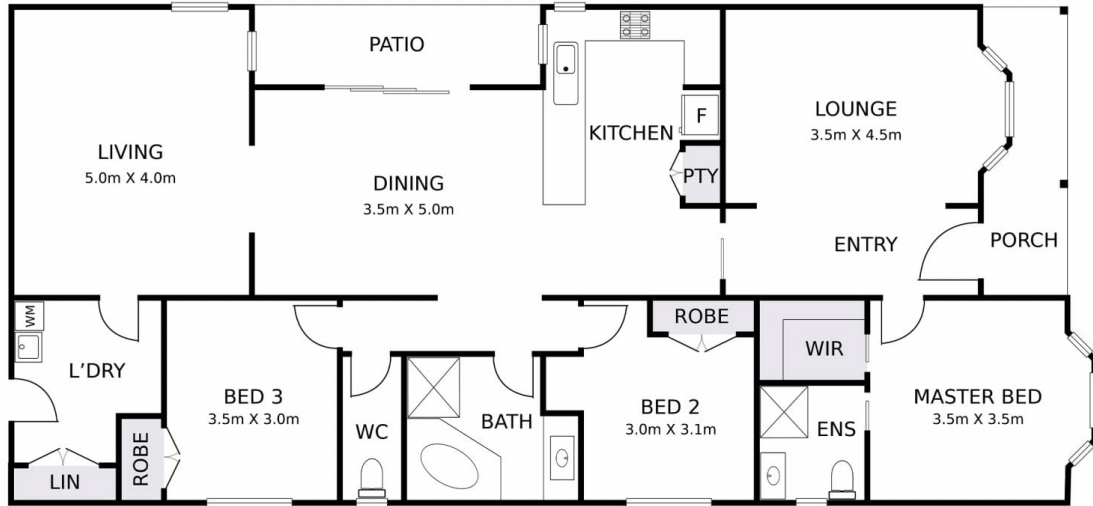


Nirav Gupta
0452 236 536



Pardeep Chahal
0431 595 725

16 SOUTHWICK BOULEVARD, ALTONA MEADOWS



DISCLAIMER: PLEASE NOTE FLOOR PLAN IS INDICATIVE ONLY AND NOT DRAWN TO EXACT SCALE. ALL DIMENSIONS ARE APPROX AND FOR ILLUSTRATION ONLY.

