



2 Fourth Mews Maddingley VIC

3  2  2 

Positioned in the highly sought-after Hill View Estate, this exceptional property showcases quality finishes throughout and offers a host of upgrades that must be seen to be fully appreciated. Designed with family living in mind, the home sits proudly on a generous 597m² (approx.) allotment and combines space, style, and functionality in one immaculate package.

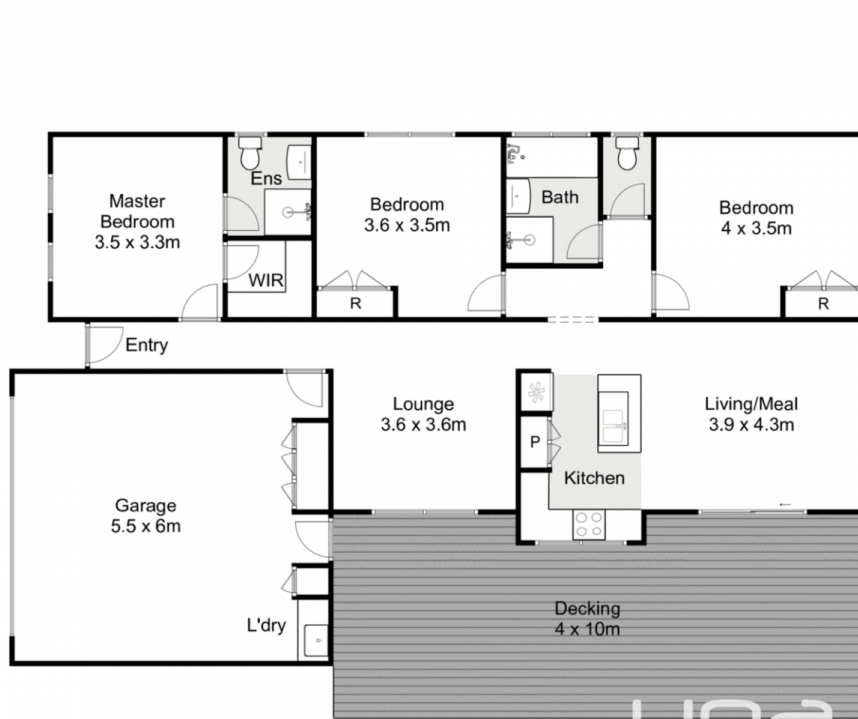
The floor plan flows effortlessly, beginning with three well-proportioned bedrooms, including a master suite complete with a large walk-in wardrobe and a private ensuite that has been thoughtfully designed with both space and comfort in mind. The remaining bedrooms are serviced by a central bathroom, ensuring practicality for family and guests alike.

Two separate living areas add flexibility to the design, with

Price : \$ 565,000
Land Size : 597 sqm
View : <https://www.ypa.com.au/8475134>



Costa Rodriguez
0484 134 841



2 Fourth Mews, Maddingley

Whilst every attempt has been made to ensure the accuracy of the floor plan contained here, measurements of doors, windows, rooms and any other items are approximate and no responsibility is taken for any error, omission, or mis-statement. This plan is for illustrative purposes only and should be used as such by any prospective purchaser. The services, systems and appliances shown have not been tested and no guarantee as to their operability or efficiency can be given.

