



58 Valewood Drive Wyndham Vale VIC

3  1  1 

Located in the popular growing city of Wyndham is this fantastic family home! Located within walking distance to local shops, schools and public transport, also within a 5-minute drive from Werribee CBD and Railway station, likewise Wyndham Vale Train Station - take your pick!

Features Include:

- ? Built in robes features in all three bedrooms
- ? Kitchen with abundance of cupboard space, pantry, cooktop and dishwasher
- ? Central bathroom close to other bedrooms with separate laundry

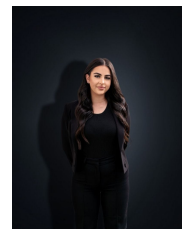
Additional features include: Air-conditioning, spacious family area and a large backyard area.

Disclaimer: The property is accepted as is at the start of the

View : <https://www.ypa.com.au/8473458>



Ashley Gates
0424 267 675



Stefanie Zahra
0406 871 722