



26 Sunshine Grove Rye VIC

3 2 2

Tucked away in one of Rye's most desirable pockets, this coastal retreat captures the very essence of Peninsula living. Set on an impressive 1,583m² (approx.), the property is perfectly positioned between the sparkling bay beaches and the wild ocean coast, with the Peninsula Hot Springs, world-class golf courses, and local wineries all just moments away.

The home itself is brimming with character and space, offering three bedrooms, a central bathroom complete with spa and a spacious primary with private ensuite. Upstairs, the light-filled interiors flow easily through generous living and dining zones, opening onto a large, covered alfresco terrace - an idyllic setting for long summer lunches or sunset entertaining.

The expansive grounds unfold beyond, with plenty of space

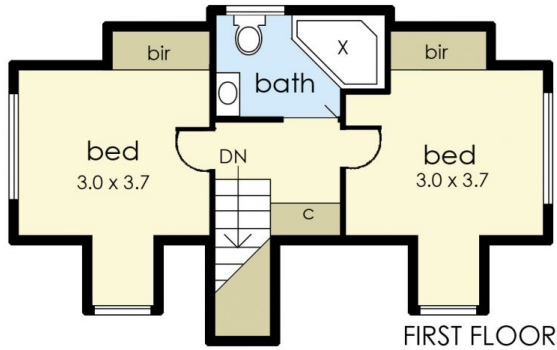
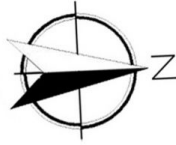
Price : \$ 880,000
Land Size : 1583 sqm
View : <https://www.ypa.com.au/8467731>



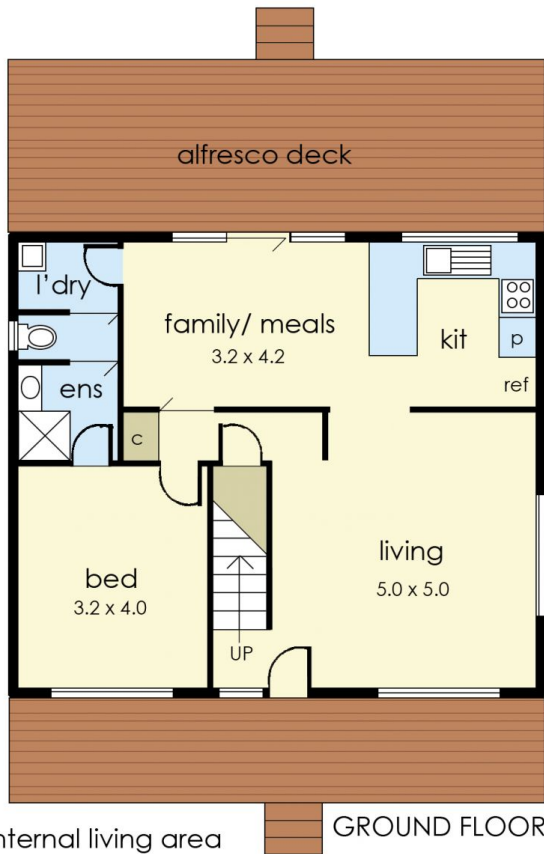
Jade Springer
0437 410 791



Kelsie Janssen
0417245204



FIRST FLOOR

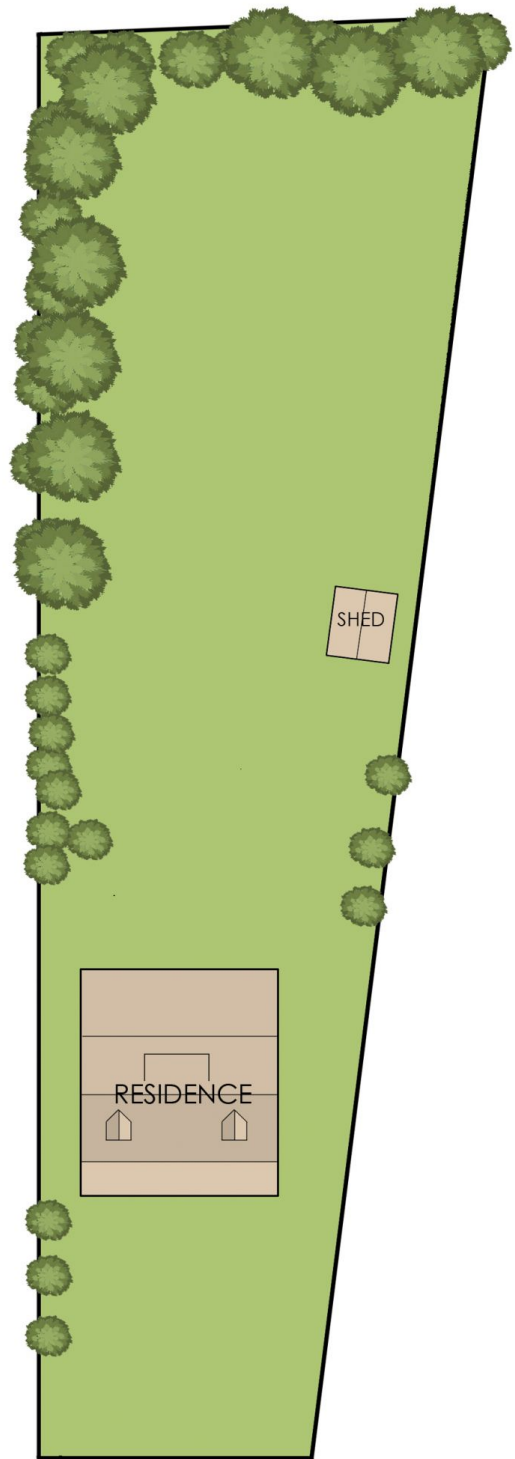


GROUND FLOOR

Internal living area
approx: 12 squares

Decking area
approx: 4 squares

Total area
approx: 16 squares



26 Sunshine Grove, Rye

The floor plan is provided for general information and illustrative purposes only. All measurements, dimensions, and layouts are approximate and may vary from the actual property. While every effort has been made to ensure accuracy, no responsibility is taken for any error, omission, or misstatement. Prospective buyers should not rely solely on the floor plan and are encouraged to conduct their own inspections and verify all details independently. The design and content of this floor plan remain the property of DND Floor Plans. ©