



44 Hillside Avenue Dromana VIC

4 2 2

Set on approx. 871 m² of low-maintenance land, this architect designed & beautifully presented 4-bedroom, 2-bathroom home with a double garage offers space, privacy, and an unbeatable lifestyle. With the entrance to Arthurs Seat State Park only about 20 metres away, you can enjoy scenic walking tracks, mountain bike trails, and peaceful bush surrounds right on your doorstep.

Spread across two levels, the home is cleverly designed for both relaxed family living and those seeking a retreat-like escape. Downstairs, the master suite creates a private parent's sanctuary, complete with a spacious bedroom, generous bathroom facilities, and a formal lounge that opens directly to the garden - a quiet space to unwind and enjoy the tranquillity.

Upstairs, three additional bedrooms offer excellent flexibility for family or guests. One enjoys a calming garden outlook,

Price : \$ 1,250,000
Land Size : 871 sqm
View : <https://www.ypa.com.au/8464240>



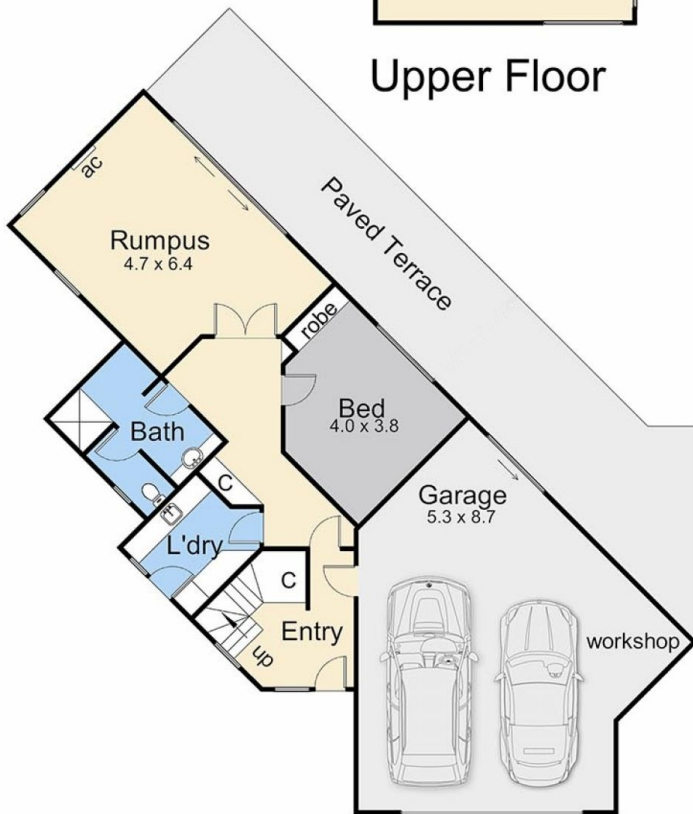
Elke Remscheid
0423 211 315



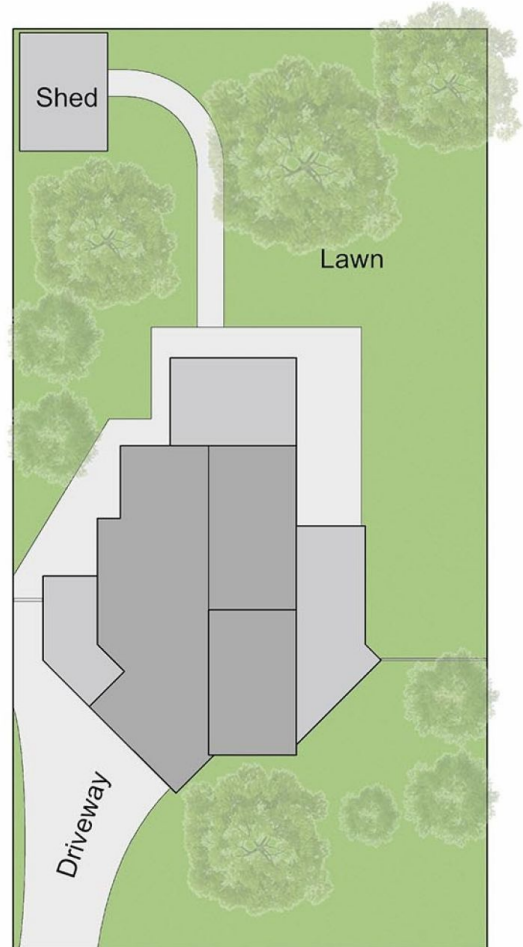
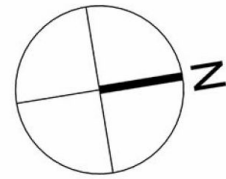
Ryan Oswald
0402 720 822



Upper Floor



Lower Floor



44 Hillside Avenue, Dromana

This floorplan is for illustration purposes only and no warranty is given to its accuracy. Purchasers are advised to carry out their own investigations. Produced by **realitywriters** (03) 5970 2222