



9 Roslyn Park Drive Harkness VIC

3 2 2

Situated in the heart of Harkness, this property sits in close proximity to all amenities including, schooling of all levels including the Melton Christian College Toolern Vale Campus, milk bars, parks and walking tracks, childcare centres and only a short drive away from Woodgrove Shopping Centre.

As you enter the almost brand-new property you are met with plenty of upgraded features including 9-foot ceilings, higher skirting boards and downlights throughout. At the front of the home the main bedroom is generous in size and features a spacious walk-in robe and a stunning ensuite featuring double vanity, stone benchtops, floor to ceiling tiling, bulkhead and a larger shower. The remaining two bedrooms are also large in size and feature built in robes and are serviced by the central bathroom that boasts the same fantastic features as the ensuite.

Price : \$ 600,000

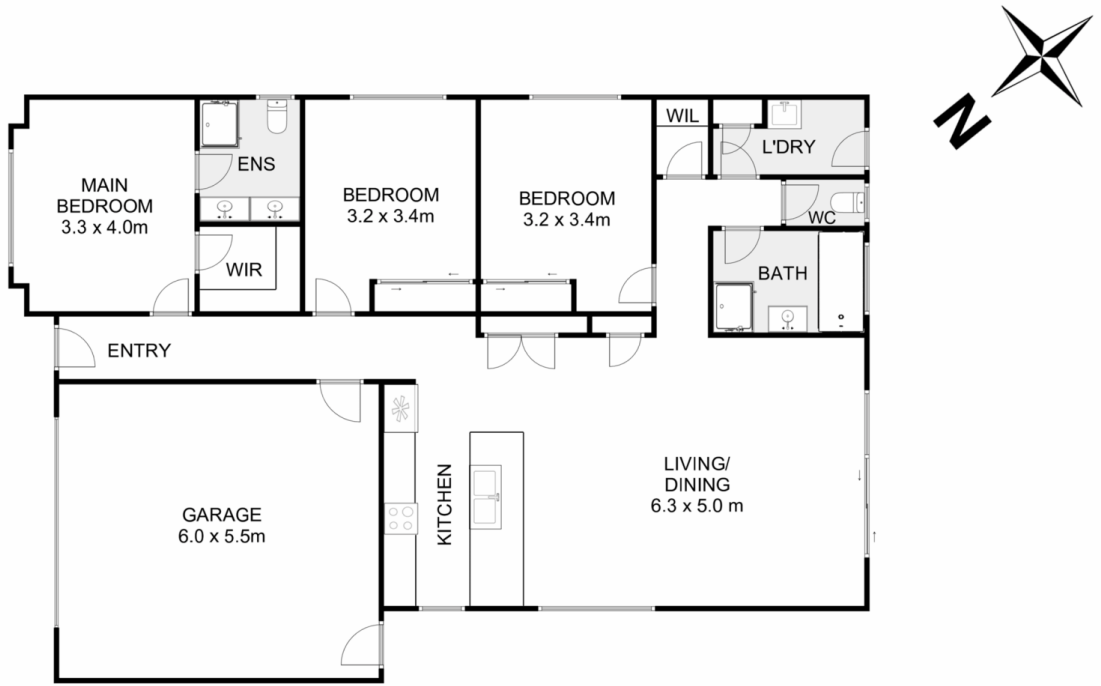
View : <https://www.ypa.com.au/8462909>



Ryan Anders
0434 900 300



Ricky Frew
0402 007 100



9 Roslyn Park Drive, Harkness



Whilst every attempt has been made to ensure the accuracy of the floor plan contained here, measurements of doors, windows, rooms and any other items are approximate and no responsibility is taken for any error, omission, or mis-statement. This plan is for illustrative purposes only and should be used as such by any prospective purchaser. The services, systems and appliances shown have not been tested and no guarantee as to their operability or efficiency can be given.

