



18 Geraldine Street Rye VIC

3 1 3

Tucked away in one of Rye's most beautiful and tightly held pockets, 18 Geraldine Street offers a rare blend of serenity, space, and style.

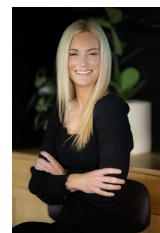
Set on a generous 866m² north-facing allotment, just 240 metres from the much-loved 16 Beach General Store and the entrance to Number 16 Beach, this single-level residence captures the essence of relaxed coastal living. From the moment you step inside, the sound of the ocean becomes part of the home's rhythm?you can quite literally fall asleep to the soothing crash of waves from your bedroom.

The street itself is lined with quality homes, enhancing the sense of community while maintaining a peaceful, natural atmosphere. Moments away, the raw beauty of the Mornington Peninsula National Park beckons, while

Price : \$ 1,055,000
Land Size : 866 sqm
View : <https://www.ypa.com.au/8460359>



Tony Talarico
0420 778 401

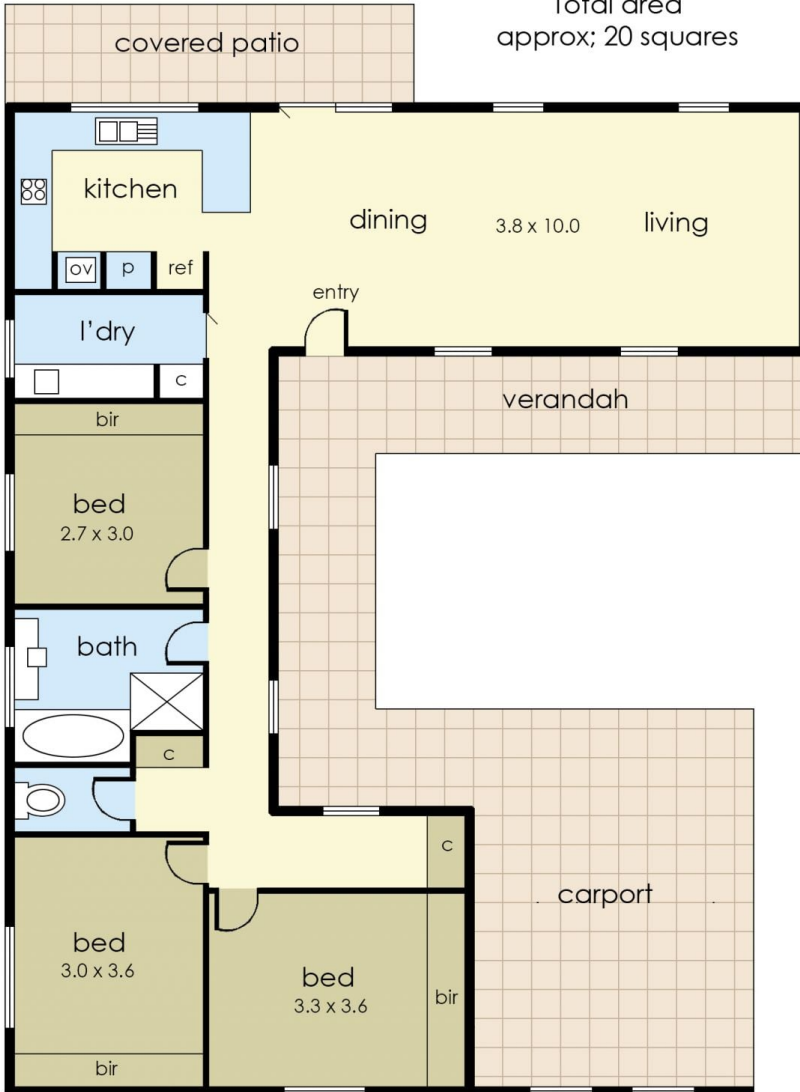


Katrina Talarico
0420 778 404

Internal living area
approx: 14 squares

Carport/ Verandah area
approx: 6 squares

Total area
approx; 20 squares



18 Geraldine Street, Rye

The floor plan is provided for general information and illustrative purposes only. All measurements, dimensions, and layouts are approximate and may vary from the actual property. While every effort has been made to ensure accuracy, no responsibility is taken for any error, omission, or misstatement. Prospective buyers should not rely solely on the floor plan and are encouraged to conduct their own inspections and verify all details independently. The design and content of this floor plan remain the property of DND Floor Plans. ©