



35 Rowes Road Werribee VIC

3 2 2

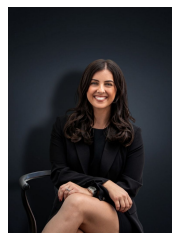
Every inch of this home has been thoughtfully renovated to deliver modern living in its finest form. From brand new carpets and fresh paint, to beautifully tiled bathrooms and landscaped gardens, all the hard work has been done—simply move in and enjoy.

Located in a centrally convenient pocket of Werribee, you'll be moments from Manorvale Primary School, Child Care Centres, Pacific Werribee Shopping Centre, Eagle Stadium, public transport and Werribee CBD. This home offers style, comfort, and space for the entire family.

The home offers;

- ? Three spacious bedrooms with built-in robes
- ? Master bedroom with ensuite and walk in robe
- ? Central bathroom with floor-to-ceiling tiles and wet room

Price : \$ 696,500
Land Size : 524 sqm
View : <https://www.ypa.com.au/8459063>



Kirsty Cunningham
0414 344 475



Ibrahim Ahmed
0449 119 577

35 Rowes Road, WERRIBEE



Whilst every attempt has been made to ensure the accuracy of the floor plan contained here, measurements of doors, windows, rooms and any other items are approximate and no responsibility is taken for any error, omission, or mis-tatement. This plan is for illustrative purposes only and should be used as such by any prospective purchaser. The services, systems and appliances shown have not been tested and no guarantee as to their operability or efficiency can be given.