



## 16 Bushy Road Clyde North VIC

3  2  2 

16 Bushy Road, Clyde North

Situated in the highly desirable Moremac Smiths Park Estate, this near-new family residence delivers the perfect combination of contemporary style, comfort, and practicality. With a versatile floorplan and quality finishes throughout, this home has been thoughtfully designed to cater to the needs of modern family living.

The master suite serves as a private sanctuary, complete with a spacious walk-in robe and sleek ensuite. Two additional bedrooms also include built-in robes. The formal lounge, perfect for both quiet relaxation and entertaining, opens gracefully into a radiant open-plan living and dining area.

At the heart of the home, the designer kitchen boasts

**Price** : \$ 650,000  
**Land Size** : 263 sqm  
**View** : <https://www.ypa.com.au/8456375>



**Kamaljeet Singh**  
0433 619 387



**Vijay Kumar**  
0431 177 566



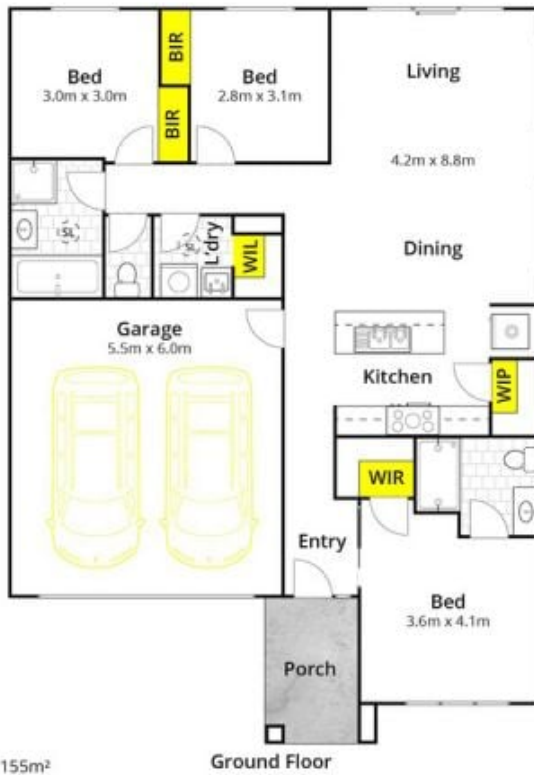
Approx House Area 155m<sup>2</sup>

Approx Land Area 262m<sup>2</sup>

Whilst [www.bwrm.com.au](http://www.bwrm.com.au) has made every attempt to ensure the accuracy of the floor plan contained here, measurements are approximate and no responsibility is taken for any error, omission, or mis-statement. This plan is for illustrative purposes only.



## 16 Bushy Road, Clyde North



Ground Floor



Site Plan

Approx House Area 155m<sup>2</sup>

Approx Land Area 262m<sup>2</sup>

Whilst [www.bwrm.com.au](http://www.bwrm.com.au) has made every attempt to ensure the accuracy of the floor plan contained here, measurements are approximate and no responsibility is taken for any error, omission, or mis-statement. This plan is for illustrative purposes only.

## 16 Bushy Road, Clyde North

