



16 Rosehill Drive Bacchus Marsh VIC

4 2 2

Don't let the driveway scare you it's what lies behind where is counts!! The driveway adds additional security to this feature filled property.

Set in a highly sought-after pocket of Bacchus Marsh, this beautifully presented 4-bedroom home has been thoughtfully designed for modern family living. The master bedroom features a stunning renovated ensuite, while the remaining bedrooms are serviced by a stylishly updated central family bathroom and a separate toilet.

Every bedroom is fitted with its own split system for personalised comfort, alongside central heating for year-round climate control. A large family laundry adds convenience, and the front of the home boasts a spacious formal living room, perfect for entertaining or quiet nights in with a feature cathedral ceiling.

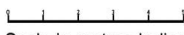
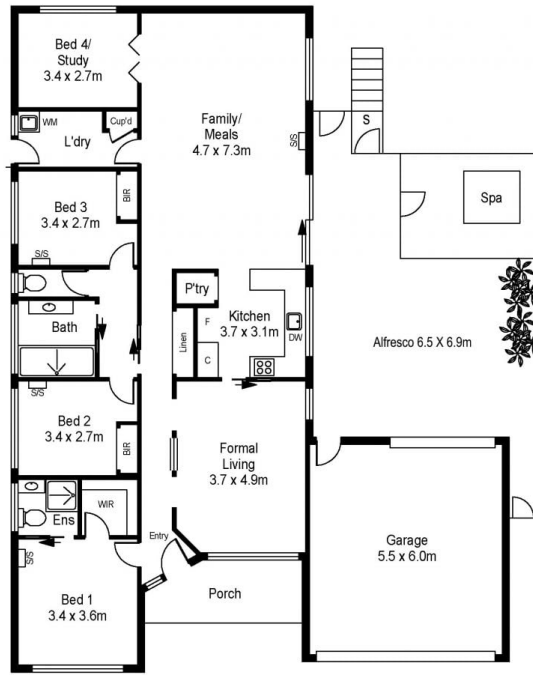
Price : \$ 755,000
Land Size : 1267 sqm
View : <https://www.ypa.com.au/8456342>



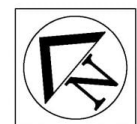
Jodi Nash
0419 342 120



Bethany Noyce
0427 604 358



Scale in metres. Indicative only. Dimensions are approximate. All information contained herein is gathered from sources we believe to be reliable. However we cannot guarantee its accuracy and interested persons should rely on their own enquiries



16 Rosehill Drive, Bacches Marsh