



6/9 Palmyra Street Greenvale VIC

4 3 2

Perfectly positioned in a well-established complex just moments from Mickleham and Somerton Roads, this near-new residence offers a stylish fusion of modern design, light-filled living, and everyday convenience in a low-maintenance setting, providing a "lock up and leave" lifestyle.

The thoughtfully designed floorplan delivers high ceilings, tall doors, attractive oak finish timber flooring and a much desired and versatile ground floor bedroom with built-in robe and access to a sleek, fully tiled elegant bathroom - ideal for guests, extended family, or a home office.

The carpeted upstairs delivers a spacious master bedroom with tailored walk-through robe and a luxurious ensuite with large shower and double vanity. Two additional robed bedrooms share an equally lavish bathroom featuring a deep freestanding bath and separate shower.

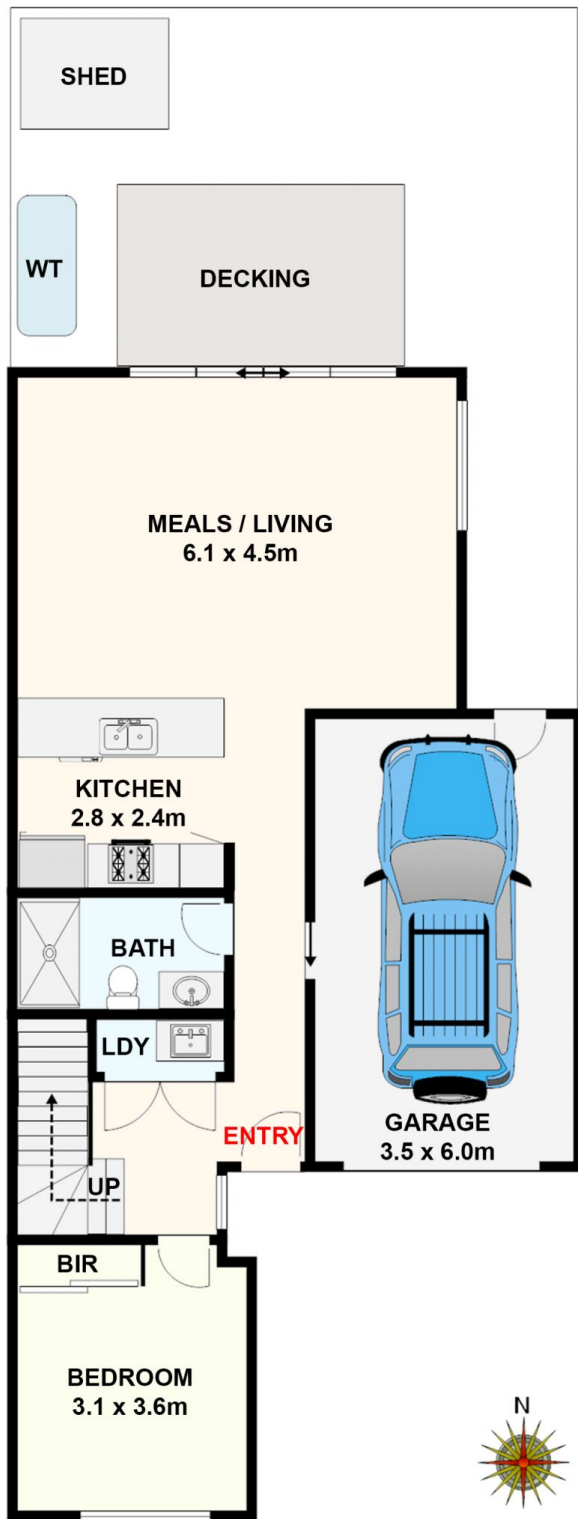
The gourmet kitchen will impress you, equipped with

Price : Private Sale | \$690,000

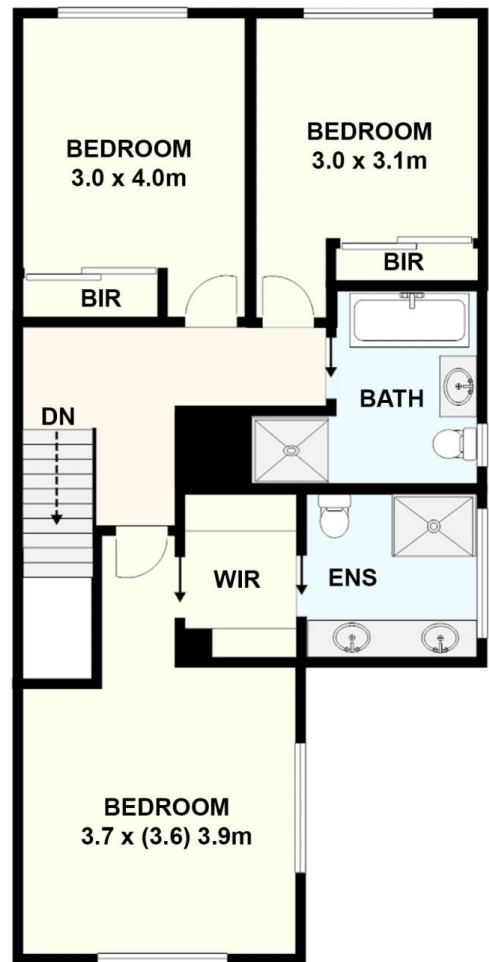
View : <https://www.ypa.com.au/8456021>



Michael Sassine
0421 023 243



Ground level



Upper level

6/9 Palmyra Street, Greenvale.
 All data and dimensions shown in this sketch are approximate.