



14 Castleton Court Gladstone Park VIC

4  1  1 

Perched proudly on the high side of a peaceful, family-friendly court in the heart of Gladstone Park, this much-loved, elevated residence, beautifully presented, offering a desirable combination of space, style, and unbeatable convenience where everything has been done, all you have to do is move in and enjoy- all within a short stroll to schools, shops, and local amenities making this the perfect setting for a relaxed family lifestyle.

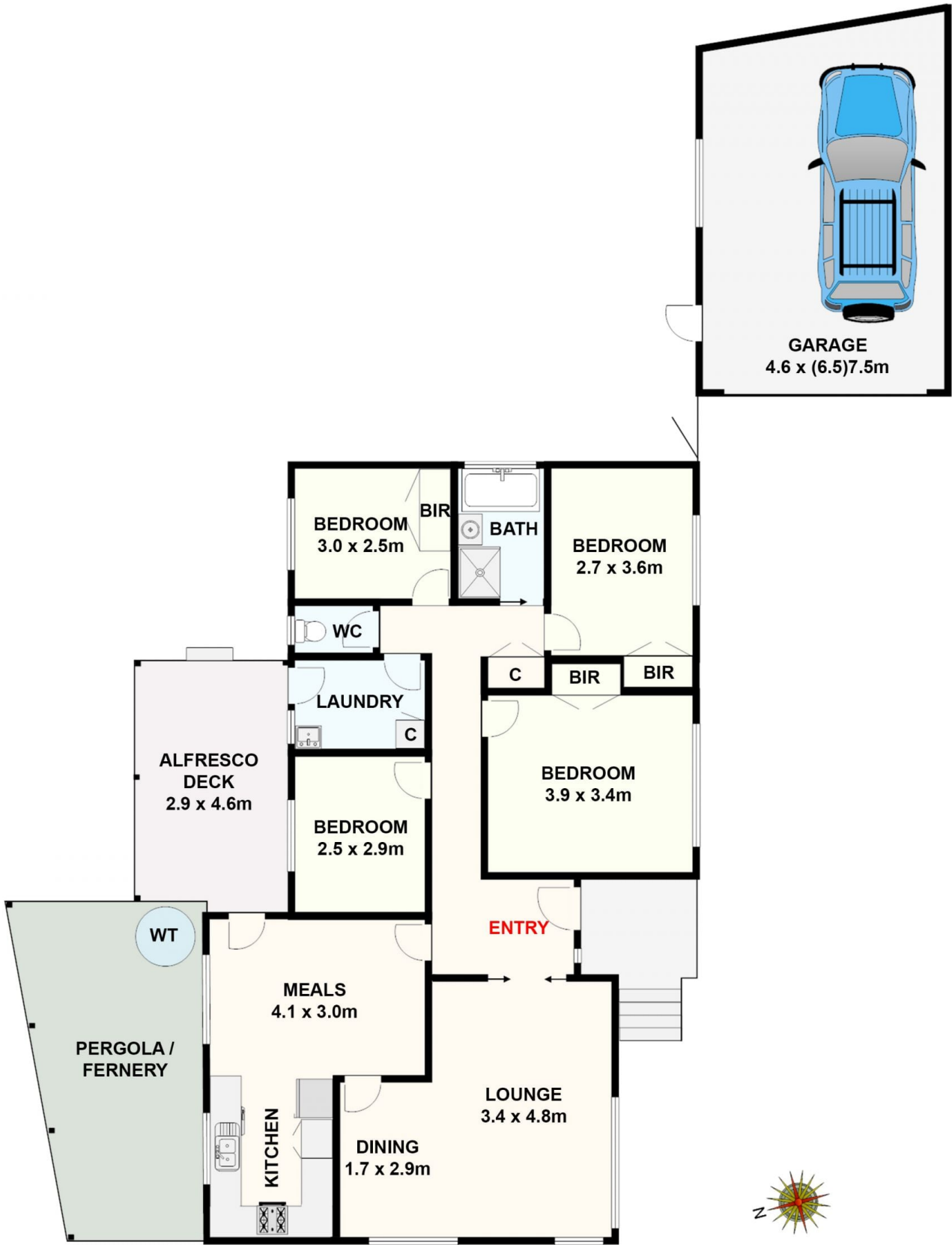
Bathed in natural light, the thoughtfully designed floorplan begins with a welcoming entry, flowing into a generous lounge and dining area, where from the windows you can see the sweeping suburban views. Accommodation includes 4 comfortable bedrooms (three with built-in robes and ceiling fan/light fixtures), serviced by an elegant, fully tiled bathroom with large shower and modern bathtub. The well equipped kitchen, complete with under-bench oven,

Price : \$ 861,000

View : <https://www.ypa.com.au/8453299>



Michael Sassine
0421 023 243



14 Castleton Court, Gladstone Park.
All data and dimensions shown in this sketch are approximate.