

19 Briardale Drive Werribee VIC

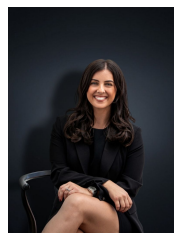
3 2 2

Welcome to 19 Briardale Drive, Werribee - a well-maintained family home that offers comfort, convenience, and thoughtful extras, making it perfect for first home buyers, growing families, or savvy investors.

Price : \$ 680,000
Land Size : 536 sqm
View : <https://www.ypa.com.au/8452796>

Step inside and discover a functional floor plan featuring three generous bedrooms, including a master with walk-in robe, ensuite, and its own split system for year-round comfort. The remaining two bedrooms are fitted with built-in robes, with one also boasting a split system.

Multiple living zones include a separate lounge for relaxing evenings and an open-plan kitchen, meals, and family area - ideal for everyday living and entertaining. The kitchen is equipped with ample cupboard and bench space, ensuring both practicality and style.



Kirsty Cunningham
0414 344 475



Ibrahim Ahmed
0449 119 577

19 Briardale Drive, WERRIBEE



Whilst every attempt has been made to ensure the accuracy of the floor plan contained here, measurements of doors, windows, rooms and any other items are approximate and no responsibility is taken for any error, omission, or mis-tatement. This plan is for illustrative purposes only and should be used as such by any prospective purchaser. The services, systems and appliances shown have not been tested and no guarantee as to their operability or efficiency can be given.