



6 Kenneth Close Hoppers Crossing VIC

3 1 2

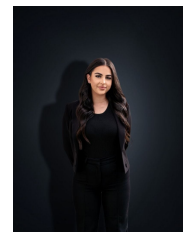
Nestled in a peaceful court, this beautifully presented home offers comfort, style, and convenience for the whole family.

View : <https://www.ypa.com.au/8452529>

Featuring floorboards throughout, this property boasts three spacious bedrooms, a bright central bathroom, and a light-filled living area perfect for relaxing or entertaining. The kitchen includes ample storage and dishwasher and overlooks the dining space, making it the heart of the home.



Ashley Gates
0424 267 675



Stefanie Zahra
0406 871 722

Enjoy year-round comfort with split system heating and cooling, plus a generous backyard ideal for kids, pets, or weekend BBQs.

Located close to schools, public transport, Pacific Werribee Shopping Centre, and local parks, this home combines lifestyle with everyday convenience.

Key Features: