



334 Morris Road Hoppers Crossing VIC

3  2  2 

Presenting an exceptional opportunity to secure a spacious family home on a substantial 739m² allotment with remarkable potential for future commercial use (STCA). Positioned along a prominent main road, this property offers both comfortable everyday living and outstanding long-term prospects, appealing to families, investors, and entrepreneurs alike.

The residence comprises three bedrooms, including a master with a private ensuite, and two generous living areas designed for comfort and functionality. A well-appointed kitchen with abundant cupboard space, beautifully finished timber floors, downlights throughout, and ducted heating ensure the home is as practical as it is inviting. The light-filled interiors create a warm and welcoming environment, perfectly suited to modern living.

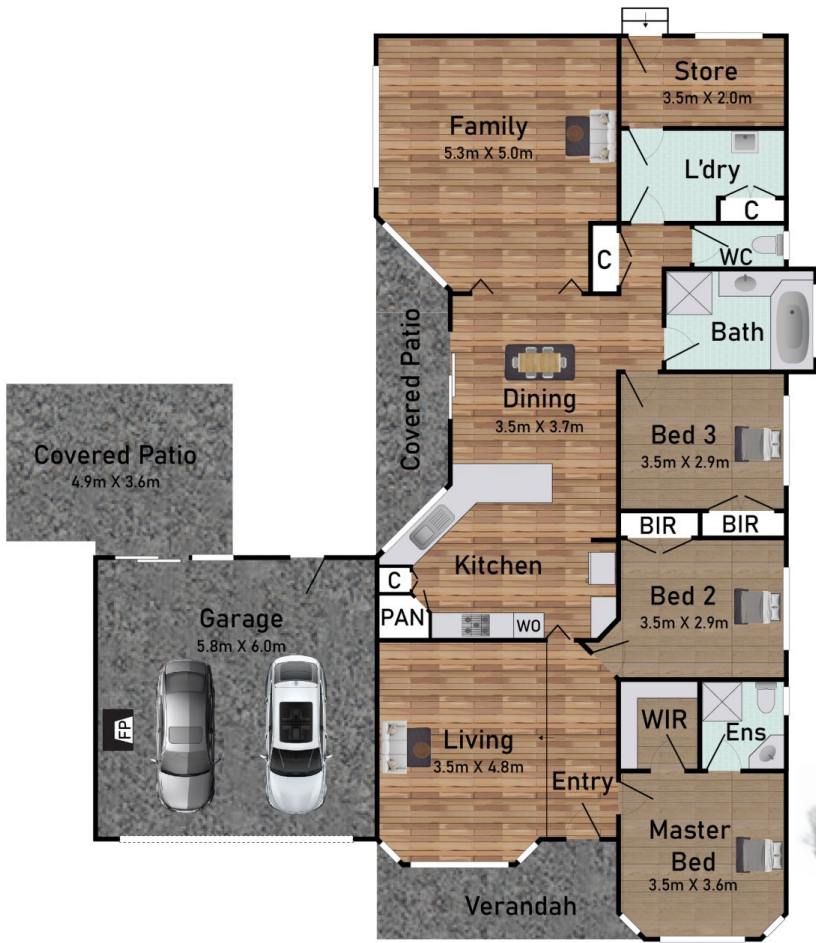
Land Size : 739 sqm

View : <https://www.ypa.com.au/8451825>

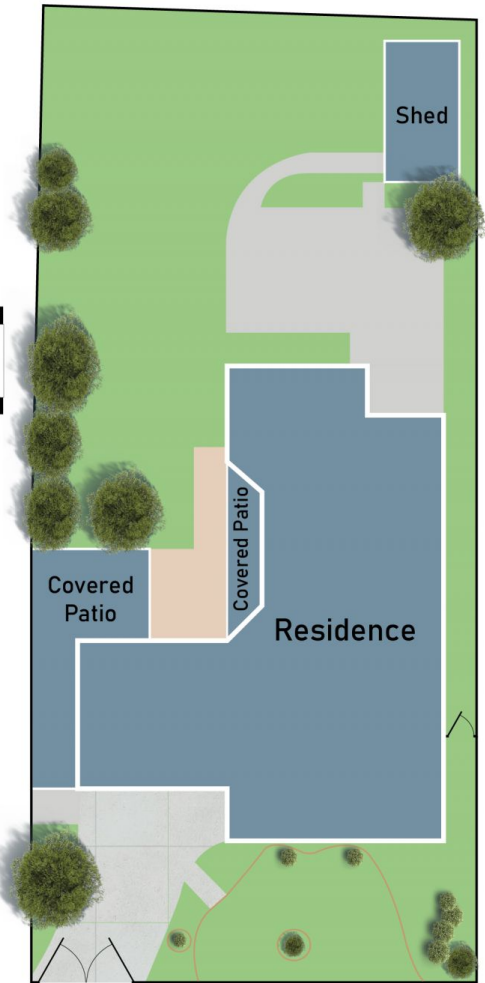


Abdul Merabi
0424 263 506

Floor Plan



Site Plan



334 Morris Road, Hoppers Crossing

* Dimensions are approximate and for illustrative purposes only