



2 Croton Lane Maddingley VIC

3 2 3

Located in the Stonehill Estate, is the most highly regarded pockets in the area, sits a home that embodies the very essence of contemporary living. This home sits between freeway access points, local shops, scenic walking tracks, Bacchus Marsh Train Station and is easy to see why the area is in such demand.

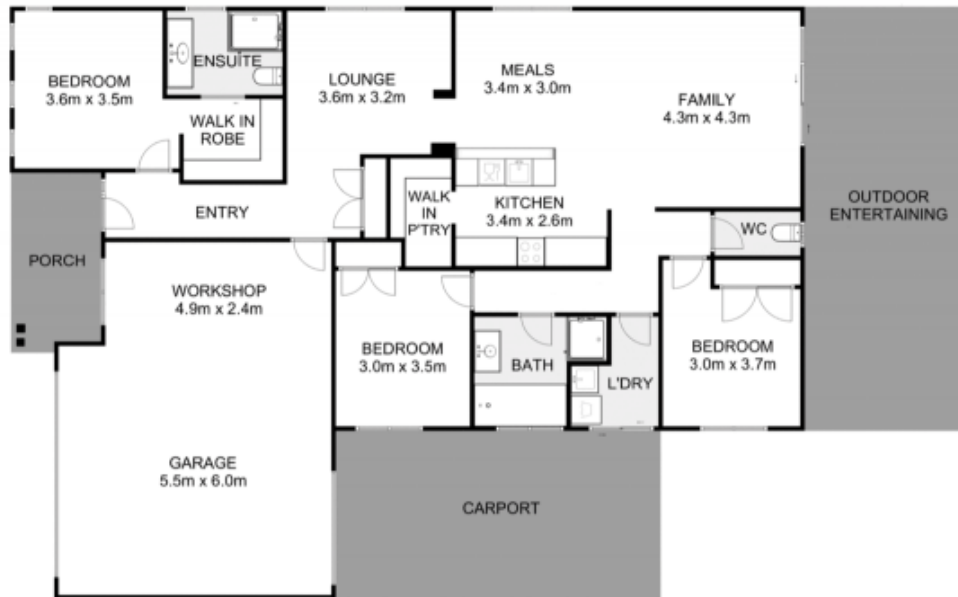
This magnificent three bedroom home offers an unrivalled combination of style, space and functionality. The grandeur of this home becomes apparent as you step inside, the grand master bedroom boasts a large walk-in robe, and a gorgeous ensuite with oversized shower and stone benchtops.

The remaining bedrooms are all generously proportioned and come with built-in robes and are complemented by a well-appointed central bathroom with the same impeccable

Price : \$ 677,500
Land Size : 642 sqm
View : <https://www.ypa.com.au/8447905>



Mark Edwards
0422 017 068



2 Croton Lane, Maddingley



Whilst every attempt has been made to ensure the accuracy of the floor plan contained here, measurements of doors, windows, rooms and any other items are approximate and no responsibility is taken for any error, omission, or mis-statement. This plan is for illustrative purposes only and should be used as such by any prospective purchaser. The services, systems and appliances shown have not been tested and no guarantee as to their operability or efficiency can be given.

