

9 Almond Close Werribee VIC

3 2 2

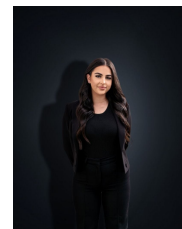
Nestled in a quiet court, this beautifully maintained home offers the perfect blend of comfort, space, and lifestyle convenience - ideal for families seeking a quality rental in a sought-after Werribee location.

View : <https://www.ypa.com.au/8446129>

The home features three generous bedrooms, including a master with ensuite and walk-in robe, plus a central bathroom and a versatile upstairs study area that can also be used as a children's playroom.



Ashley Gates
0424 267 675



Stefanie Zahra
0406 871 722

Enjoy two spacious living areas, a central kitchen with adjoining meals area, and seamless flow out to a large, decked outdoor entertaining space - perfect for all-season use. The landscaped gardens provide a peaceful, private setting for everyday relaxation.

Additional features include: