



## 24 Rockingham Circuit HARKNESS VIC

4 2 2

YPA Melton proudly presents this beautifully maintained family home, perfectly positioned in the highly sought-after Willandra Estate. Situated directly opposite tranquil parklands and conveniently close to public transport, schools, shopping centres, and sporting facilities, this location offers the ideal lifestyle for families.

Inside, you'll find four generously sized bedrooms, all with built-in robes. The master suite is thoughtfully designed with a walk-in robe and a private ensuite featuring stunning floor-to-ceiling tiles, while the remaining three bedrooms are serviced by a bright, central bathroom. At the heart of the home is a stylish kitchen equipped with stone benchtops, 900mm stainless steel appliances, a feature splashback, and ample bench and cupboard space?perfect for those who love to cook and entertain. The open-plan meals and living area provides a spacious and inviting

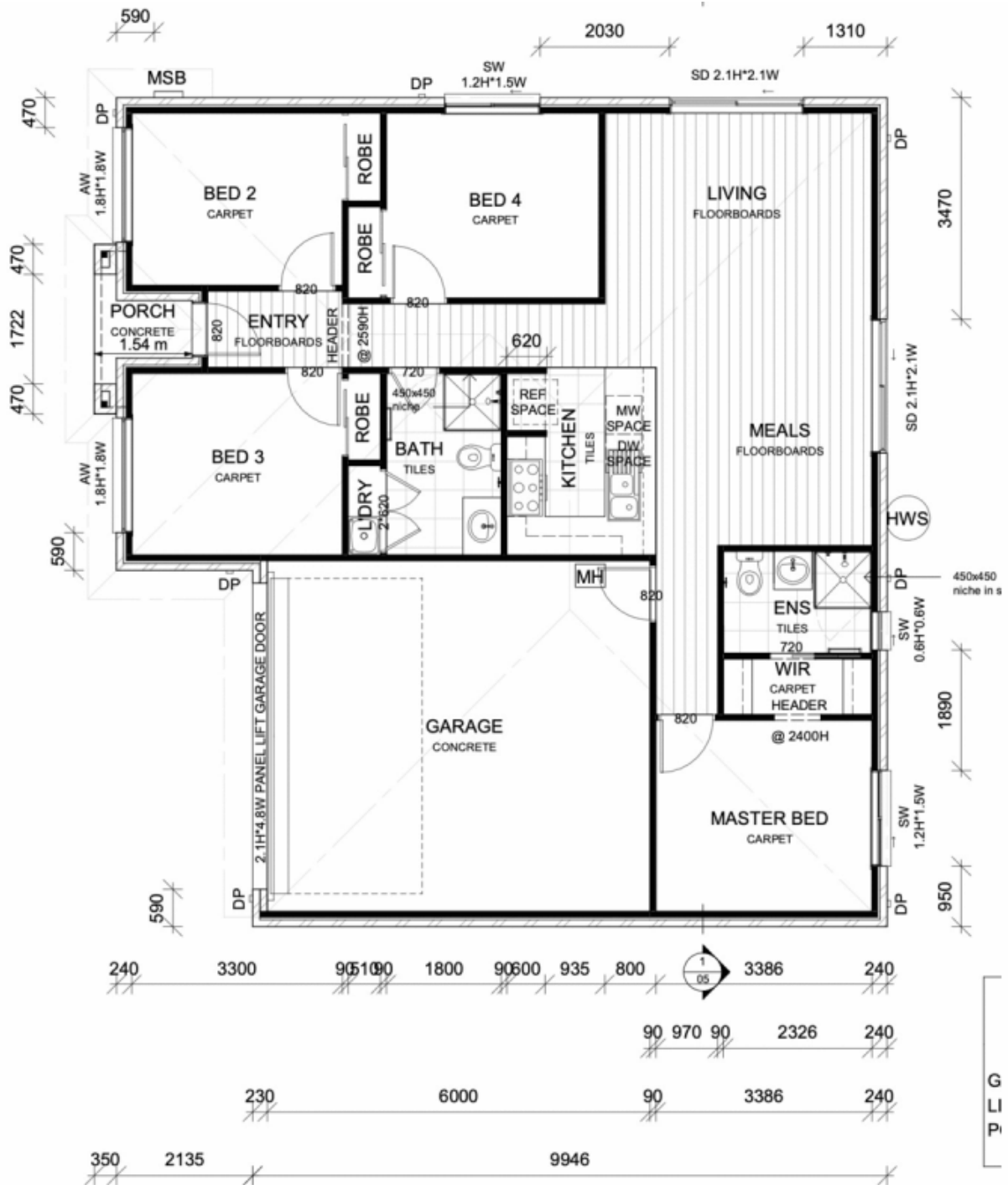
View : <https://www.ypa.com.au/8442488>



**Kimberley McLelland**  
0426 211 338



**Rachel Gordon**  
0405 939 945



G  
L  
I  
P