

28 Russell Street Werribee VIC

3 2 1

Situated in the highly sought after "south side" of werribee is this brand new townhouse. Offering close proximity to several schools, public transport, access to Princes highway, Werribee's CBD, tourism precinct and much more.

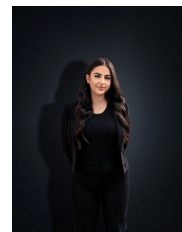
View : <https://www.ypa.com.au/8440255>

Property features include:

- ? Upon entry you are greeted by the living
- ? Study with sliding barn door
- ? Large hostess kitchen offering an abundance of bench and cupboard space
- ? Master bedroom with walk in robe and remaining two bedrooms with mirrored built in robes
- ? Central main bathroom upstairs and separate toilet downstairs
- ? Single garage on remote



Ashley Gates
0424 267 675



Stefanie Zahra
0406 871 722