



6/161 Glenroy Road Glenroy VIC

2 2 1

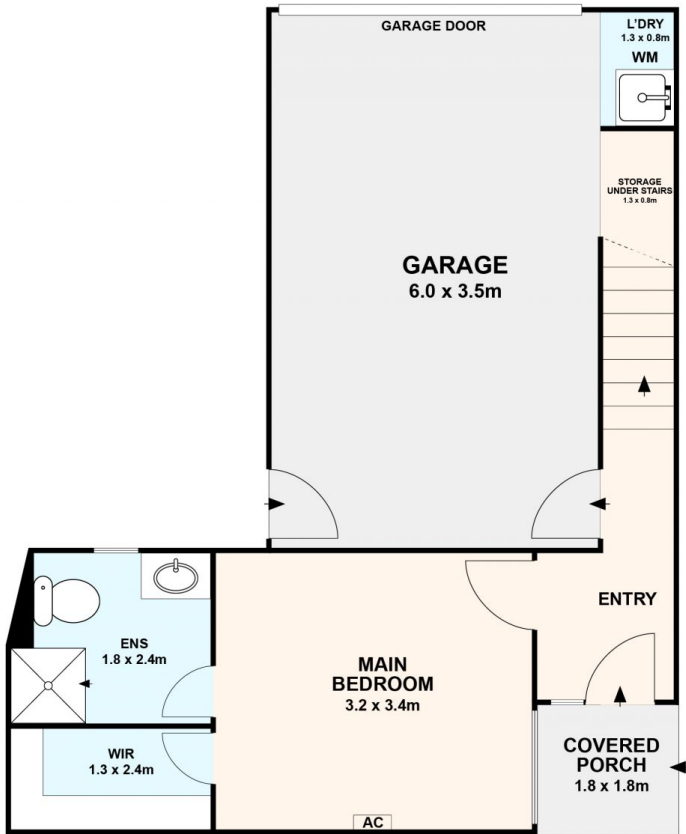
Designed for easy living and positioned for privacy, this modern, low-maintenance townhouse is ideal for first home buyers, downsizers, or smart investors. Move-in ready, it features a spacious master bedroom with walk-in robe and ensuite on the ground floor. Upstairs, enjoy light-filled reverse living with a stylish kitchen showcasing Caesarstone bench tops and stainless-steel appliances, flowing into an open-plan meals and living area. A second bedroom with built-in robe, central bathroom, and a private balcony complete the upper level. Additional highlights include split system heating and cooling in the master and living areas, stunning hardwood timber flooring, a private courtyard, and a remote single garage with internal access. Ideally located just a short walk to Glenroy Station, and close to Glenroy College, local schools, childcare, Sewell Reserve, shops on Pascoe Vale Road, and easy access to the Western Ring Road, this is lifestyle, location, and

Price : \$ 571,250

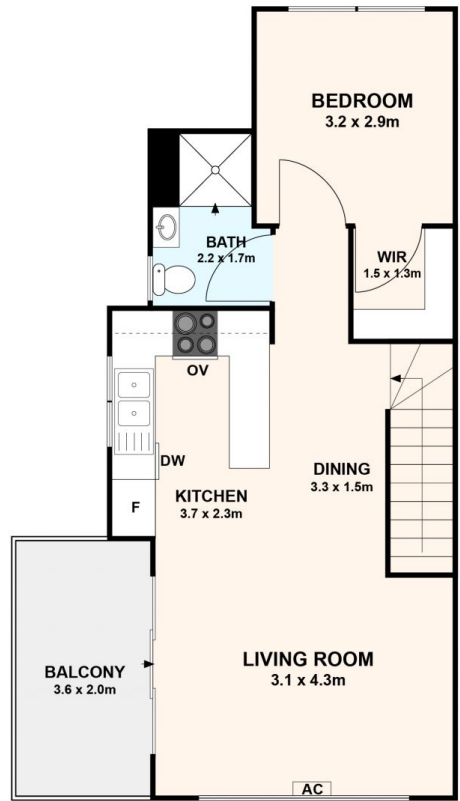
View : <https://www.ypa.com.au/8438640>



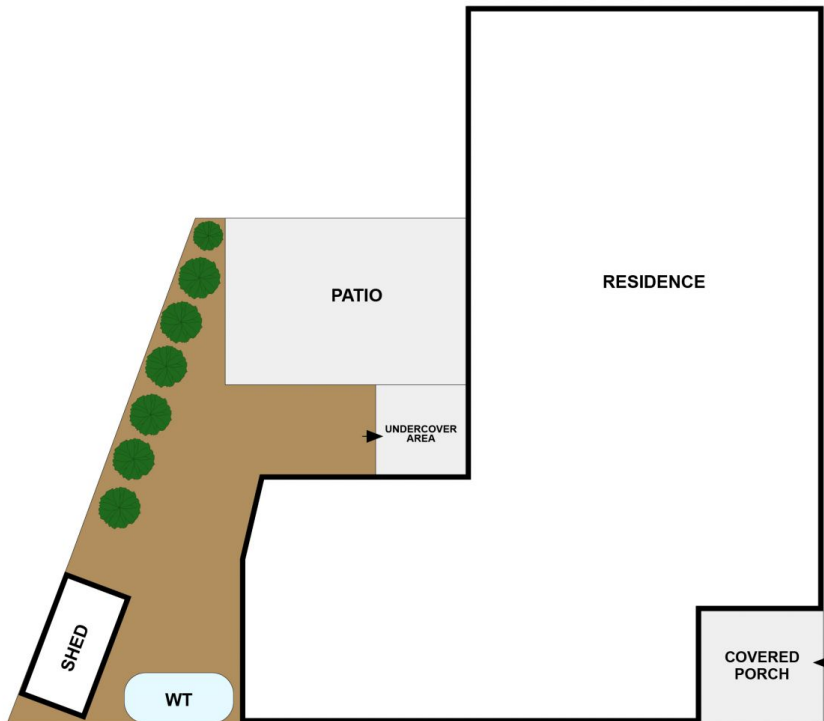
Eddi Bagdadi
0432 208 933



GROUND LEVEL



FIRST LEVEL



SITEPLAN

Unit 6/161 Glenroy Rd, Glenroy VIC 3046, Australia
 All data and dimensions shown in this sketch are approximate.

