



12/900 Pascoe Vale Road Glenroy VIC

2  1  2 

Nestled at the rear of the complex for ultimate privacy, this sleek three-storey townhouse at 12/900 Pascoe Vale Road, Glenroy blends premium finishes with practical design to suit modern lifestyles.

Price : \$ 492,000

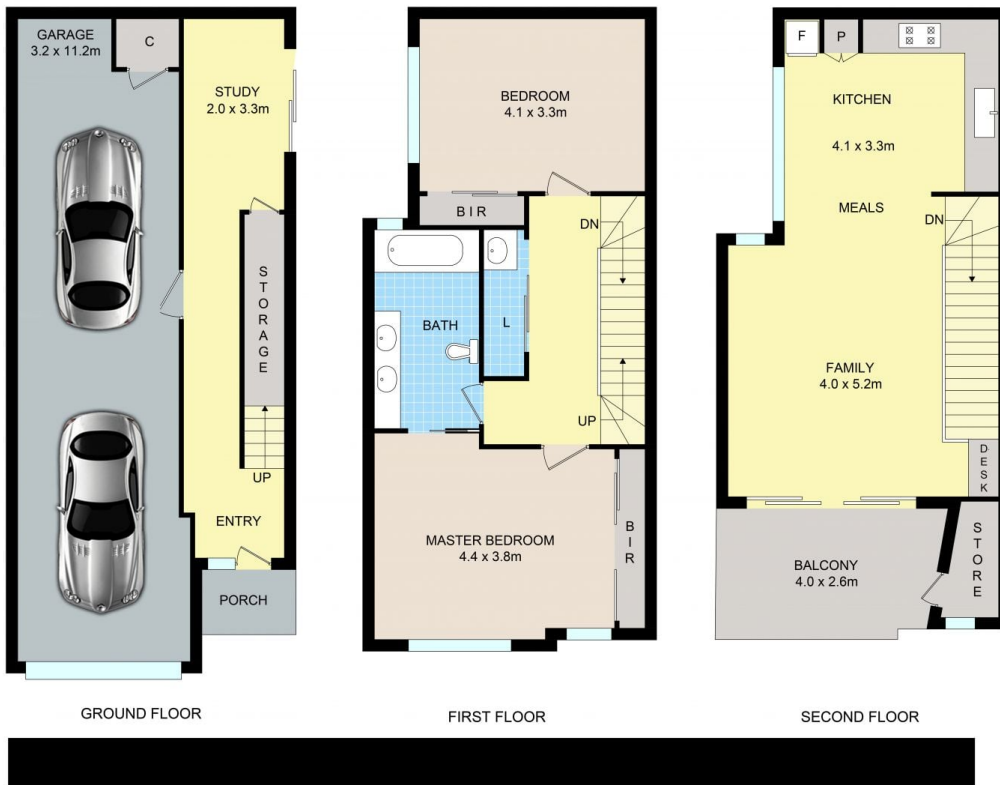
View : <https://www.ypa.com.au/8415022>

The ground floor welcomes you with elegant Italian resin flooring, a study space with its own external access - ideal for those working from home - plus handy under-stair storage and a remote double garage. Peace of mind is assured with a security shutter on the external door.

On the first floor, two generous bedrooms await. The master suite features a built-in robe and private access to the beautifully renovated central bathroom, showcasing double sinks, a separate shower and bath, and more of that luxurious Italian resin. A second bedroom also offers a built-in robe, and both enjoy the warmth of floating



Tala El Hayek
0436 392 460



12/900 Pascoe Vale Rd, Glenroy

Disclaimer: Floor plan is for marketing purposes and is to be used as a guide only. Measurements are approximate and for illustrative purposes. Interested parties should make and rely on their own enquiries or refer to contract drawings for more accurate information.